

Fifth Framework Programme
(1998 - 2002)

Thematic programme :

Quality of Life and Management of Living Resources

Call proposal : 1999/C64/14

Concerted action

DOLPHINS

**Development of Origin Labelled Products:
Humanity, Innovation, and Sustainability**

Technical annex

Key Action n° 5

Sustainable agriculture, fisheries and forestry,
and integrated development of rural areas including mountain areas.

Proposal n° PL QLRT-1999-30593

July 2000

TABLE OF CONTENTS

1. OBJECTIVES AND EXPECTED ACHIEVEMENTS	3
2. PROJECT WORKPLAN	4
2.1. INTRODUCTION.....	4
2.2. PROJECT STRUCTURE, PLANNING AND TIMETABLE	5
2.3. DESCRIPTION OF THE WORKPACKAGES	15
3. ROLE OF PARTICIPANTS	25
4.1. ADMINISTRATIVE MANAGEMENT	46
4.2. PROJECT PARTNERS AND DECISION MAKING STRUCTURE	46
4.3. MANAGEMENT OF WORKPACKAGES.....	46
4.4. COMMUNICATION MANAGEMENT AND INFORMATION FLOW	47
4.5. PROGRESS MONITORING	47
4.6. PROJECT PLANNING AND TIME TABLE.....	48
5. EXPLOITATION AND DISSEMINATION ACTIVITIES	49
6. ETHICAL ASPECTS	49

1. OBJECTIVES AND EXPECTED ACHIEVEMENTS

Agri-food traditional and typical products are an important resource for agricultural and rural development in many areas of the European Union: these products show a strong link with their area of origin, and very often their name coincides with that of a specific geographical area. For this reason we will refer to these products as *Origin Labelled Products* (OLPs), also when there is no legal instrument protecting their name.

OLPs activate a complex system of relationships, which interest and involve the local production systems where these products are made, their marketing and distribution systems, rural development dynamics, and consumers/citizens.

This system is affected and conditioned by many public policies, not only at EU and international level, but also at national and local level: agricultural policies, rural development policies, competition and health policies are among the most important.

Within food quality policy, the EU has recently strengthened its action to protect OLPs, in particular with Council Regulation n. 2081/92 by introducing two legal instruments of protection: PDO and PGI.

Traditional and typical agro-food products (OLPs) have been deeply analysed in the last years by many researchers in many countries of the European Union, and also in other European countries. Many different points of view have been reached on different topics, but many others have been until now neglected or less developed. There comes the need to know, synthetize and discuss the main research results, also in order to re-direct research efforts and concentrate on relevant issues both from an academic and an operative-political point of view.

A) GENERAL AIM AND SCIENTIFIC OBJECTIVES

The GENERAL AIM of the Concerted Action (CA) DOLPHINS is to ease and strengthen exchanges of the scientific results of the researches conducted in European countries on OLP-related topics. This has to be achieved by means of:

1. the setting-up of a network of scientists involved in research on OLPs;
2. the activation of dissemination instruments in order to meet the needs of citizens, policy-makers, researchers, firms and all the other operators involved in OLPs.

The SCIENTIFIC OBJECTIVES for this concerted action are threefold :

1. to better understand the characteristics and the evolution of OLPs in the agro-food system, also by analysing the links and synergies between OLPs and local/global production and marketing systems, rural development with particular reference to employment in rural areas, and consumers/citizens;
2. to provide tools for an assessment of public policies at various levels concerning PDO-PGI and other OLPs, and the effects of legal protection, financial support and public promotional initiatives on production and marketing systems, competition policy, rural development, consumers/citizens concerns and expectations;
3. to provide relevant recommendations to the EU in order to better prepare and support the negotiation process in the framework of the WTO Round regarding the protection and promotion of OLPs.

B) EXPECTED ACHIEVEMENTS

By setting-up a network of researchers on OLPs, through exchanges of information on research results and meetings, it will be possible to:

- reach an up-to-date systematic knowledge on the main topics relating to characteristics, evolution, problems and opportunities given to/by OLPs, with particular attention to the relationship between OLPs on the one side, and local/global production and marketing system, rural development (with particular reference to interconnection with non-agricultural activities in rural areas and to employment), consumers' and citizens' expectations and concerns, on the other side; a Report on OLP Characteristics, Evolution, Problems and Opportunities will be produced, resulting from Workpackages (WPs) activity;
- understand the effects of public policies on OLPs and, through these products, on local and rural development, on the agro-food system, and on consumers/citizens; the proposed action aims at offering policy makers socio-economic tools of analysis to assess the impacts of policy tools and regulations related to OLPs; a Report on Policies Effects on OLPs, resulting from WPs Activity will be produced;
- provide relevant recommendations to the EU in order to support WTO international trade negotiations; a Document containing recommendations for WTO will be produced;
- make information circulate within academics, policy-makers, public institutions, consumers and citizens, firms and other institutions; besides distributing the Report on OLP Characteristics, Evolution, Problems and Opportunities and the Report on Policies Effects on OLPs, a WEB Page will be built, containing:
 - an Electronic journal on OLPs
 - a Synthesis of results of Partners' research activities
 - a Database on researches on OLPs
 - a Database on publications on OLPs
 - a Database on Research Institutions working on OLPs
 - Documents produced by WorkPackages during the action;

2. PROJECT WORKPLAN

2.1. Introduction

DOLPHINS is based on many researches already conducted by the Partners of the Action, financed at local, national and/or EU level. Hence the Concerted Action (CA) give the opportunity to exchange, discuss and summarize the results of these researches, by means of the Meetings, short term staff exchanges within the network, implementation of new researches on specific points of interests, circulation of documents and results of researches on the topics involved (also by means of the Web Site), and other tools specified in the Workplan.

In order to achieve the objectives, DOLPHINS will consider the following topics :

1. "Origin Labelled Products" characteristics and legislative regulations;
2. The consumer/citizen concerns and expectations on OLPs;
3. OLPs local production systems and supply chains structure and organisation;
4. OLPs relationships with rural development and rural employment.

Attention will be focused on two main points:

1. the relationships between OLP and each of the other topics;
2. the role of public policies at various levels (EU, Member State, Regional level, etc.) on these links.

DOLPHINS - contractors and assistant contractors participating to the project:

n.	Country	Partner	Role
1	France	INRA – UREQUA	CO
2	France	INRA – ETIQ	MB (with 1)
3	France	INRA – LRDE	MB (with 1)
4	France	University of Nantes– CEDRAN	MB (with 1)
5	Italy	University of Parma – UNIPR	CR
6	Italy	CRPA	MB (with 5)
7	Italy	University of Florence – DSE - UNIFI	MB (with 5)
8	Switzerland	ETHZ	CR
9	Germany	University of Munchen	CR
10	Spain	Unidad De Economia Agraria Servicio de Investigation Agroalimentaria	CR
11	United Kingdom	Newcastle University	CR
12	United Kingdom	Edinburgh University	MB (with 11)
13	Belgium	Fondation Universitaire Luxembourgeoise	CR
14	Finland	University of Helsinki	CR
15	Portugal	IRIA	CR

2.2. Project structure, planning and timetable

List of participants

Partner n.1 – INRA – UREQUA

n.	Name	Address	Email	Telephone	Fax
1	Bertil Sylvander	INRA – UREQUA 8 Avenue Laennec 72 000 – Le Mans, France	bsylvander@inra.univ-lemans.fr	243 399 401	243 399 409
2	Bernard Lassaut	idem	blassaut@inra.univ-lemans.fr	243 399 408	243 399 409

Partner n.2 – INRA – ETIQ

n.	Name	Address	Email	Telephone	Fax
1	Gilles Allaire	INRA – ETIQ BP 27 – 31326 CASTANET TOLOSAN France	Allaire@toulouse.inra.fr	561 285 086	561 285 372

Partner n.3 – INRA – LRDE

n.	Name	Address	Email	Telephone	Fax
1	François Casabianca	INRA – LRDE	Fca@corte.inra.fr	495 451511	495 461 181
2	Jean-Antoine Prost	Quartier Grossetti, 20250 Corte, France	Jap@corte.inra.fr	495 451506	495 461 181

Partner n.4 – CEDRAN

n.	Name	Address	Email	Telephone	Fax
1	Louis Lorvellec	University of Nantes CEDRAN	Louis.Lorvellec@droit.univ-nantes.fr	251 785 552	251 78 55 50
2	J.P.Doussin	(Research Center for agro-food law) 44322 Nantes Cedex 3	Doussin@aol.com	251 785 553	251 78 55 50

Partner n.5 – UNIPR

n.	Name	Address	Email	Telephone	Fax
1	Corrado Giacomini	Istituto di Economia Agraria e Forestale, V.Kennedy 6 – 43100 Parma	Giacomo@unipr.it	0521 902414	0521 902498
2	Elisa Montesor	Università di Verona – Facoltà di Economia	Elisam@giuliani.univr.it	045 8098236	
3	Filippo Arfini	Istituto di Economia Agraria e Forestale, V.Kennedy 6 – 43100 Parma	F_arfini@unipr.it	0521 902496	0521 902498
4	Cristina Mora		Crismora@unipr.it	0521 902383	0521 902498
5	Cecilia Mancini		Cmancini@unipr.it	0521 902 383	0521 902498

Partner n.6 – CRPA

n.	Name	Address	Email	Telephone	Fax	
1	Kees De Roest	Centro Ricerche produzioni animali (CRPA) Reggio Emilia – Italy	K.De.Roest@crpa.it	0522 556439	0522 435142	
2	Franco Torelli				0522 556439	0522 435142
3	Eugenio Corradini			E.Corradini@crpa.it	0522 556439	0522 435142
4	Alberto Menghi			A..Menghi@crpa.it	0522 556439	0522 435142

Partner n.7 – DSE Dipartimento di Scienze Economiche – Università di Firenze

n.	Name	Address	Email	Telephone	Fax
1	Alessandro Pacciani	Dipartimento di Scienze economiche, V.Curtatone, 1 50123 Firenze	Apacciani@cce.unifi.it	055 2710447	055 2710424
2	Andrea Marescotti		Marescot@facec.cce.unifi.it	055 2710441	055 2710424
3	Giovanni Belletti		Belletti@facec.cce.unifi.it	055 2710425	055 2710424
4	Sivia Scaramuzzi		Scara@facec.cce.unifi.it	055 2710427	055 2710424

Partner n.8 – ETHZ

n.	Name	Address	Email	Telephone	Fax	
1	Bernard Lehman	Institut d'Economie Rurale de l'Ecole polytechnique federale, 8092 Zurich, Switzerland		41 21 693 57 13	41 21 693 57 17	
2	Dominique Barjolle				41 21 693 57 13	41 21 693 57 17
3	Jean-Marc Chappuis				41 21 693 57 13	41 21 693 57 17
4	Martin Dufour				41 21 693 57 13	41 21 693 57 17
5	Stephane Boisseaux				41 21 693 57 13	41 21 693 57 17

Partner n.9 – TUM -PFM

n.	Name	Address	Email	Telephone	Fax
1	Michael Besch	Technische Universität München – Weihenstephan – Alte Akademie 14 – D 85350 – Freising Germany	Besch@weihenstephan.de	8161 713591	8161 7145 36
2	Frank Thiedig		Thiedig@weihenstephan.de	8161 713575	8161 7145 36
3	Burkhard Schaer		Schaer@weihenstephan.de	8161 713592	8161 7145 36

Partner n.10 – SIA DGA

n.	Name	Address	Email	Telephone	Fax
1	Luis Miguel Albisu	Unidad de Economía Agraria – Servicio de Investigación Agroalimentaria 50080 Zaragoza, Spain	Albisu@mizar.csic.es	976 576361	976 57 5501
2	Liliana Meza		Meza@mizar.csic.es	976 576361	976 57 5501
3	Ana Isabel Sanjuan				948 169394

Partner n.11 – UNEW

n.	Name	Address	Email	Telephone	Fax
1	Mitchell Ness	Department of Agricultural Economics and Food Marketing (AEFM) University of New Castle, New Castle Upon Tyne NE1 7RU, United Kingdom	Mitchell.Ness@ncl.ac.uk	0191 222 6928	191 222 6720
2	Angela Tregear		a.e.j.tregear@nd.ac.uk	0191 2228886	191 222 6720

Partner n.12 – UEDIN

n.	Name	Address	Email	Telephone	Fax
1	Ron Wilson	Institute of Ecology and Resource Management (IERM), University of Edinburgh	Ron.Wilson@ed.ac.uk	131 535 4112	131 667 2601
2	Kate Corcoran	Department of Agricultural Economics and Food Marketing (AEFM) University of New Castle, New Castle Upon Tyne NE1 7RU, United Kingdom	Corcoran@SRV0.bio.ed.ac.uk	131 535 4384	131 667 2601

Partner n.13 – FUL

n.	Name	Address	Email	Telephone	Fax
1	Marc Momont	SEED, Fondation Universitarie	Mormont@ful.ac.be	63230868	63 230 818
2	Pierre Stassart	Luxembourgeoise Av. Longwy 185 – 6700	Stassart@ful.ac.be	63230813	63 230 818
3	Eric Collet	Arlon Belgium	Collet@ful.ac.be	63230931	63 230 818

Partner n.14 – UNIVHELSINKI

n.	Name	Address	Email	Telephone	Fax
1	Jukka Kola	Faculty of Agriculture and Forestry University of Helsinki – FIN 00014 Latokartanonkaari, 9 – Helsinki Finland		358 9 1911	358 9 19158096
2	Sirpa Karjalainen				
3	Terhi Latvala			358 9 1911	358 9 19158096
4	Sirka Uski			358 9 1911	358 9 19158096

Partner n.15 – INIA

n.	Name	Address	Email	Telephone	Fax
1	Antonio Fragata	Departamento de Estudos de Economia e Sociologia Agrárias (DEESA) Quinta do Marques – Oeiras – (Portugal)		351 2131 31741	351 213 131 783
2	Laura Graça				
3	Agostinho Cristovao				
4	Maria F. Mesquita				
5	Artur Cristovao				
6	Manuel Luis Tiberio				
7	Jeronimo Santos				
8	Luis Pacheco				
9	Jorge Marques				
10	Joao Miguel Pereira				
11	Mariana Saldanha				

TABLE 1 – WORKPACKAGE LIST

DOLPHINS Workplan Structure

Work-package No.	Workpackage title	Responsible participant No.	Person months	Start month	End month	Deliverable(s) No.
WP 0	Starting phase	1	8,2	0	2	D0
WP 1	OLP products: definition, characteristics, legal protection	3; assistant 4	14,9	3	18	D1
WP 2	Link between OLP and local production systems, supply chain analysis	10; assistants 6, 12	15,7	3	18	D2
WP 3	Link between OLP and rural development	7; assistant 15	14,0	3	18	D3
WP 4	Link between OLP and Consumers and citizens	11; assistant 2	21,1	3	18	D4
WP 5	Characteristics, evolution, problems and opportunities for OLP	5; assistant 9	16,4	19	28	D5
WP 6	Policies evaluation	8; assistant 14	18,2	19	28	D6
WP 7	Synthesis and recommendations	1; assistant 13, 4, 5, 7, 8	37,1	29	36	D7; D8
WP 8	Information and dissemination	1; assistant: 5; 7; 8	13,0	3	36	D9; D10; D11; D12
	TOTAL		158,5			

Diagram 1 : Participants contribution and timetable

Diagram 2 : Timetable of workpackages

TABLE 2 - LIST OF MILESTONES

N°	Title	Delivery date	Responsible for milestone	Participants	Description
M1	Guidelines for Task1	Month 2	1	1, 3, 5, 7, 8,10, 11	Starting phase: guidelines
M2	Guidelines for Task4	Month 2	1	1, 3, 5, 7, 8,10, 11	Starting phase: guidelines
M3	Construction and implementation of DOLPHINS Web Site	Months 6	1	1; 5; 7; 8	The DOLPHINS Web Page will contain a restricted area, aiming at supporting information and researches exchanges among participants to Concerted Action, and a public area where the results of the Action will be accessible.
M4	First Meeting WP1	Month 9	3	1; 3; 4; 5; 6; 7; 8; 9; 10; 11; 12; 13; 15	First meeting on OLP products: definition, characteristics, legal protection
M5	First Meeting WP2	Month 9	10	1; 3; 5; 6; 7; 8; 9; 10; 12; 13; 14; 15	First meeting on Link between OLP and production-marketing systems (local/global)
M6	First Meeting WP3	Month 9	7	1; 2; 3; 5; 7; 8; 9; 10; 11; 13; 14; 15	First meeting on Link between OLP and Rural development
M7	First Meeting WP4	Month 9	11	All partners	First meeting on Link between OLP and Consumers and citizens
M7B	Preliminary Working Document on WTO's negotiations concerning OLP	Month 12	4	All partners	Short preliminary working document elaborated on the basis of the first meeting of WP 1 to 4, concerning the WTO's negotiations concerning OLP's protection.
M8	Database on researches on OLPs	Months 12	5	1; 5; 7; 8	Synthesis of results of Partners' research activities to be collected in a Database on researches on OLPs (DOLPHINS Web Page). Documents produced by WorkPackages during the action will be put on-line on the DOLPHINS Web Page
M9	Database on publications on OLPs	Months 12	7	1; 5; 7; 8	Database containing publications on OLPs (DOLPHINS Web Page)
M10	Database on Research Institutions working on OLPs	Months 12	8	1; 5; 7; 8	Database containing a list of Research Institutions working on OLPs (DOLPHINS Web Page)
M11	Second Meeting WP1	Month 16	3	1; 3; 4; 5; 6; 7; 8; 9; 10; 11; 12; 13; 15	Second Meeting on OLP products: definition, characteristics, legal protection
M12	Second Meeting WP2	Month 16	10	1; 3; 5; 6; 7; 8; 9; 10; 12; 13; 14; 15	Second meeting on Link between OLP and production-marketing systems (local/global)

M13	Second Meeting WP3	Month 16	7	1; 2; 3; 5; 7; 8; 9; 10; 11; 13; 14; 15	Second meeting on Link between OLP and Rural development
M14	Second Meeting WP4	Month 16	11	All partners	Second meeting on Link between OLP and Consumers and citizens
M15	Deliver of Report (WP1)	Month 18	3	1; 3; 4; 5; 6; 7; 8; 9; 10; 11; 12; 13; 15	Deliver of Report about the state of the art with bibliography and selected relevant issues (WP1)
M16	Deliver of Report (WP2)	Month 18	10	1; 3; 5; 6; 7; 8; 9; 10; 12; 13; 14; 15	Deliver of Report about the state of the art with bibliography and selected relevant issues (WP2)
M17	Deliver of Report (WP3)	Month 18	7	1; 2; 3; 5; 7; 8; 9; 10; 11; 13; 14; 15	Deliver of Report about the state of the art with bibliography and selected relevant issues (WP3)
M18	Deliver of Report (WP4)	Month 18	11	All partners	Deliver of Report about the state of the art with bibliography and selected relevant issues (WP4)
M19	Meeting WP5	Month 26	5	1; 3; 4; 5; 6; 7; 8; 9; 10; 11; 12; 13; 15	Meeting on Characteristics, evolution, problems and opportunities for OLP
M20	Meeting WP6	Month 26	8	1; 2; 3; 5; 6; 7; 8; 9; 10; 11; 12; 13; 14; 15	Meeting on Policies evaluation
M21	Deliver of the WP5 Report	Month 28	5	1; 3; 4; 5; 6; 7; 8; 9; 10; 11; 12; 13; 15	Report on Characteristics, evolution, problems and opportunities for OLP
M22	Deliver of the WP6 Report	Month 28	8	1; 2; 3; 5; 6; 7; 8; 9; 10; 11; 12; 13; 14; 15	Report on Policies evaluation
M23	Final international Seminar	Month 34	1	All partners	The Final Seminar will consist in contributions made by the participants on the basis of the WP1 to WP6, and in invited lectures prepared in collaboration with known experts in the concerned field, who will have to read the reports from the WorkPackages and deliver their points of views.
M24	Deliver of the WP7 Report	Month 36	1	All partners	Meetings Proceedings
M25	Deliver of Final Recommendation Key Topics on OLPs	Month 36	1	All partners	Final recommendation Key topics on OLPs and implications for EC policies implementation, with special reference to WTO international trade negotiations

TABLE 2 – LIST OF DELIVERABLES

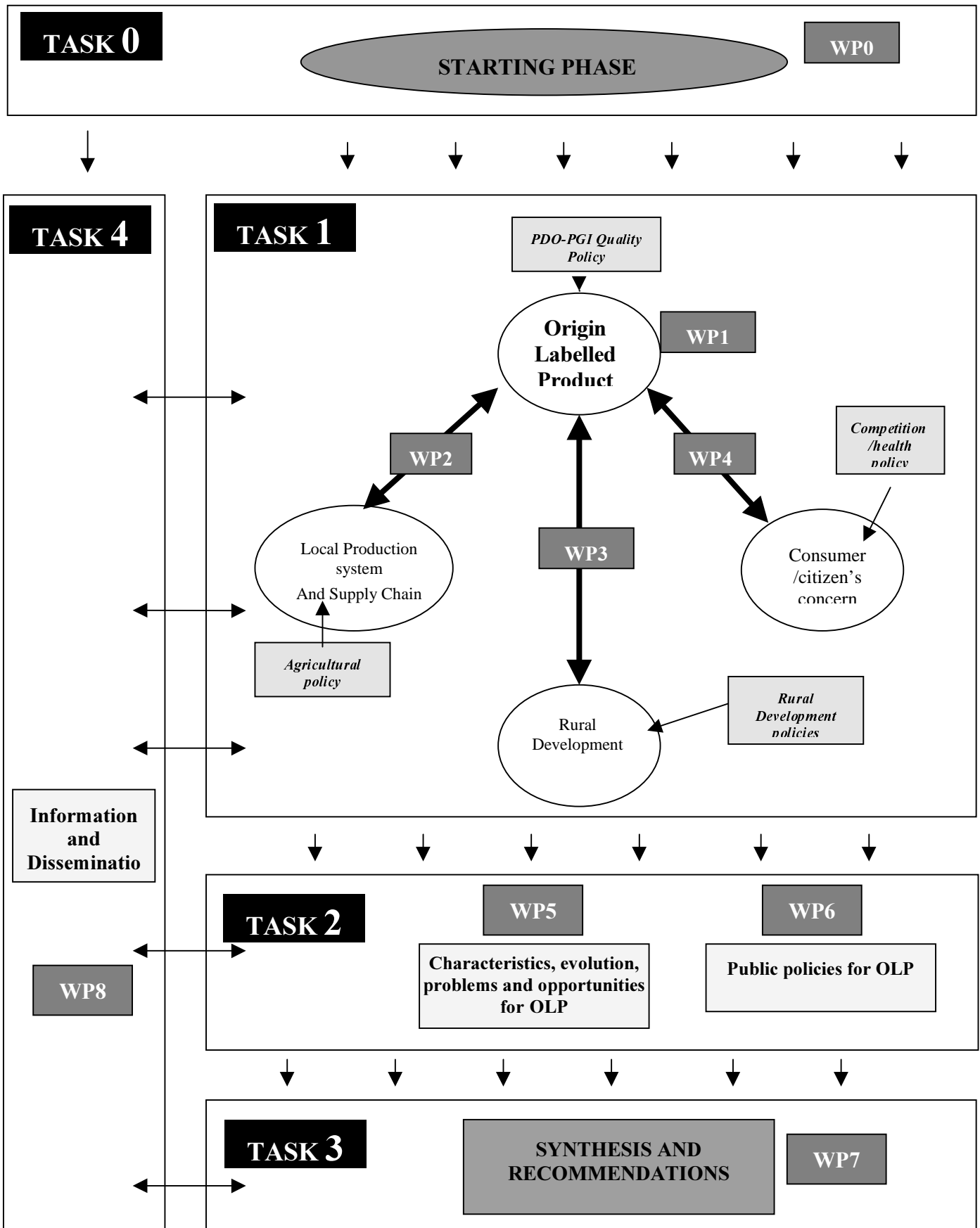
Deliverable N°	Title	Participants responsible	Other participants	Delivery date	Nature	Dissemination level¹	Dissemination target²
D0	Guidelines with activities programme and definition of organisational aspects	1, 5, 7, 8	10, 11	end month 2	O	CO	CA Participants
D1	WP1 Report about the state of the art on the basis of meetings minutes, included bibliographical analysis and special part collecting reports on selected relevant issues	3, 4	1, 5, 6, 7, 8, 9, 10, 11, 12, 15	end month 18	R	RE	CA Participants UE Commission
D2	WP2 Report about the state of the art on the basis of meetings minutes, included bibliographical analysis and special part collecting reports on selected relevant issues	6, 10, 12	1, 3, 5, 7, 8, 9, 13, 14, 15	end month 18	R	RE	CA Participants UE Commission
D3	WP3 Report about the state of the art on the basis of meetings minutes, included bibliographical analysis and special part collecting reports on selected relevant issues	7, 15	1, 2, 3, 5, 8, 9, 10, 11, 13, 14	end month 18	R	RE	CA Participants UE Commission
D4	WP4 Report about the state of the art on the basis of meetings minutes, included bibliographical analysis and special part collecting reports on selected relevant issues	11	1, 2, 3, 4, 5, 6, 7, 8, 9, 10, 12, 13, 14, 15	end month 18	R	RE	CA Participants UE Commission
D4B	Preliminary working document on WTO's negotiations concerning OLP's protection	4	1, 5, 7, 8	End month 12	R	RE	CA Participants UE Commission
D5	WP5 Report on OLP characteristics, evolution, problems and opportunities	5, 9	1, 3, 4, 6, 7, 8, 10, 11, 12, 13, 15	end month 28	R	PU	CA Participants; UE Commission; Academics; Policy makers ; Public institutions ; Firms
D6	WP6 Report on Policies effects on OLPs	8, 14	1, 2, 3, 5, 6, 7, 9, 10, 11, 12, 13, 15	end month 28	R	PU	CA Participants; UE Commission; Academics; Policy makers ; Public institutions ; Firms
D7	Meeting Proceedings	1, 13, 5, 7, 8	2, 3, 4, 5, 6, 7, 8, 9, 10, 11, 12, 14, 15	end month 36	R	PU	CA Participants; UE Commission; Academics; Policy makers ; Public institutions ; Firms
D8	Final recommendation Key topics on OLPs and implications for EC policies implementation, with special reference to WTO international trade negotiations	1, 13, 5, 7, 8	2, 3, 4, 5, 6, 7, 8, 9, 10, 11, 12, 14, 15	end month 36	O	RE	UE Commission

Deliverable N°	Title	Participants responsible	Other participants	Delivery date	Nature	Dissemination level ¹	Dissemination target ²
D9	DOLPHINS Web Site	1, 13, 5, 7, 8	5, 7, 8	end month 6	O	PU	CA Participants; UE Commission; Academics; Policy makers ; Public institutions ; Firms
D10	Database on researches on OLPs	1	5, 7, 8	end month 12	O	RE	CA Participants UE Commission Public institutions
D11	Database on publications on OLPs	1	5, 7, 8	end month 12	O	RE	CA Participants UE Commission Public institutions
D12	Database on Research Institutions working on OLPs	1	5, 7, 8	end month 12	O	RE	CA Participants UE Commission Public institutions

¹PU=Public, RE =restricted to a group specified by the consortium (including EC services), CO = confidential, only for members of the consortium (including EC services)

²Indicate the target audience or the potential users/beneficiaries of such a deliverable

Graphical presentation of the project's components



2.3. Description of the workpackages

TASK 0 – STARTING PHASE

WP 0 – STARTING PHASE

Phase: Task 0

Start date or starting event: Month 1

Completion date: Month 2

Partner responsible: 1; assistant: 5; 7; 8 (Steering Committee)

Person-months: 1:2,5; 3:0,9; 5:1,1; 7:1,3; 8:0,7; 10:0,8; 11:0,9 (total:8,2)

Objectives

Task 0 has the aim of activating the whole project.

Methodology

One meeting with the co-ordinator, the Steering Committee and the Responsibles of WPs of Task1 (WP1, WP2, WP3 and WP4) will be held in order:

- to fix important dates and start operation activities of Task1 (WP1, WP2, WP3 and WP4)
- to create a system of links among Partners and a system of results dissemination (guidelines for WP8 - Task4)

Deliverables

D0 Guidelines with activities programme and definition of organisational aspects

Milestones and expected results

- M1 - Guidelines for Task1 (month n.2)
- M2 - Guidelines for Task4 (month n.2)

TASK 1 – ANALYTICAL WORKPACKAGES

WP 1 - OLP PRODUCTS: DEFINITION, CHARACTERISTICS, LEGAL PROTECTION

Phase : Task 1**Start date or starting event:** Month 3**Completion date : Month 18****Partner responsible:** 3; assistant: 4**Person-months :** 1:1,2; 3:0,9; 4:2,0; 5:1,1; 6:0,7; 7:0,7; 8:1,4; 9:0,9; 10:0,8; 11:0,9;12:1,0; 13:1,7; 15:1,6 (total:14,9)**Objectives**

Clarifying the various definitions of OLP in agri-food system in different European countries, and their relationships with other typologies of high-quality food products, according to the specifics of the various scientific disciplines involved (ethnology, economy, sociology, biology, geography, etc.);

- Collecting information about OLPs in different European countries, and about instruments used till now to «measure» traditionality and typicity in agri-food system;
- Analysing the modalities by which the Law in different countries has defined and protected OLPs, with special reference to the ways and mechanisms by which each member State has implemented EEC Regulation n. 2081/92
- Assessing the legal protection of OLP with regards to EU and WTO regulations and providing EU with diagnosis of negotiations basis
- Identifying needs for further research

Methodology

Two Plenary meetings are planned.

In the first meeting each participant group brings experiences and results of research activities in its country of origin with reference to previous mentioned objectives of the WP, and identifies the most important topics and issues to be developed and deepened for the second meeting of Task1. The first Plenary meeting will give the opportunity to exchange research results and methodologies, to discuss the main issues in order to meet the objectives, and to select relevant common issues to be developed.

Development of selected issues will be based on bibliographical research, discussions and interviews with firms, public institutions and other relevant operators, information and experience exchanges within WP1 participants. The second Plenary meeting will put together further development of research activities, and the results of the activity brought on to develop the selected specific issues.

Deliverables

D1 WP1 Report about the state of the art on the basis of meetings minutes, included bibliographical analysis and special part collecting reports on selected relevant issues. The Report give also a basic support to EU for WTO negotiations process.

D4B Part 1 of the preliminary working document on WTO's negotiations

Milestones and expected results

- M4 - First Meeting (month n.9)
- M11 - Second Meeting (month n.16)
- M15 - deliver of the Report about the state of the art with bibliography and selected relevant issues (D1) (month n.18)

TASK 1 – ANALYTICAL WORKPACKAGES

WP 2 - LINK BETWEEN OLP AND PRODUCTION-MARKETING SYSTEMS (LOCAL/GLOBAL)

Phase: TASK 1**Start date:** Month 3**Completion date :** Month 18**Partner responsible:** 10; assistants: 6, 12**Person-months:** 1: 1,2; 3:0,9; 5:2,2; 6:0,7; 7:1,3; 8:1,4; 9:0,9; 10:1,6; 12:2,0; 13:0,9; 14:1,0; 15:1,6 (total:15,7)**Objectives**

- Analysis of theoretical and analytical tools and methods used in the analysis of OLP local production systems, of vertical co-ordination mechanisms among firms, in supply chain and agri-food system analysis, of local-global connections
- Analysis of local production and marketing systems related to OLP products (case-studies), differences from production and marketing system relating to “conventional” or other typologies of high-quality food products
- Environment and sustainability of OLP production and marketing systems
- Impact on employment and income (firms and local systems)
- Role of information transmission, education, formation, training
- Marketing of OLP products: analysis of the different marketing channels and distribution methods used, modern distribution and traditional marketing channels, new promotional and marketing methods
- Policies: analysis of public policies affecting the link between OLP and production and marketing system, with special reference to Common Agricultural Policy and Agenda 2000, international trade liberalisation, WTO
- Assessing the legal protection of OLP with regards to EU and WTO regulations and providing EU with diagnosis of negotiations basis
- Identifying needs for further research

Methodology

Two Plenary meetings are planned.

In the first meeting each participant group brings experiences and results of research activities in its country of origin with reference to previous mentioned objectives of the WP, and identifies the most important topics and issues to be developed and deepened for the second meeting of Task1. The first Plenary meeting will give the opportunity to exchange research results and methodologies, to discuss the main issues in order to meet the objectives, and to select relevant common issues to be developed.

Development of selected issues will be based on bibliographical research, discussions and interviews with firms, public institutions and other relevant operators, information and experience exchanges within WP2 participants.

The second Plenary meeting will put together further development of research activities, and the results of the activity brought on to develop the selected specific issues.

Deliverables

D2 WP2 Report about the state of the art on the basis of meetings minutes, included bibliographical analysis and special part collecting reports on selected relevant issues. The Report give also a basic support to EU for WTO negotiations process.

D4B Part 2 of the preliminary working document on WTO's negotiations

Milestones and expected results

- M5 - First Meeting (month n.9)
- M12 - Second Meeting (month n.16)
- M16 - deliver of the Report about the state of the art with bibliography and selected relevant issues (D2) (month n.18)

TASK 1 – ANALYTICAL WORKPACKAGES

WP 3 - LINK BETWEEN OLP AND RURAL DEVELOPMENT

Phase: TASK1

Start date : Month 3

Completion date : Month 18

Partner responsible: 7; assistant: 15

Person-months: 1:1,2; 2:1,4; 3:0,9; 5:1,1; 7:2,6; 8:0,7; 9:0,9; 10:0,8; 11:0,9; 13:0,9; 14:1,0; 15:1,6 (total:14,0)

Objectives

- Analysis of theoretical and analytical tools and methods used in the analysis of connections between OLP and rural development
- Analysis of the link between OLP and rural development: have OLPs an impact on rural development and to which conditions? How rural development can help to re-launch OLPs? Case-studies
- Environment and sustainability of OLP production and marketing systems in rural areas
- Impact on employment and income (firms and rural systems): analysis of the inter-connections between OLP and other economic, social and cultural activities in rural areas (tourism, craft, industrial activities, services, etc.); integrated sustainable rural development
- Role of information transmission, education, formation, training
- Marketing of OLP products in rural areas: the role of rural tourism and agri-tourism, landscape, and environmental, cultural, artistic resources in the marketing of OLP products; new OLP promotional and marketing methods linked to rural development
- Policies: analysis of public policies affecting the link between OLP and rural development, with special reference to EU rural development policies (Agenda 2000, Structural Funds, LEADER) and national-local rural development policies
- Assessing the legal protection of OLP with regards to EU and WTO regulations and providing EU with diagnosis of negotiations basis
- Identifying needs for further research

Methodology

Two Plenary meetings are planned. In the first meeting each participant group brings experiences and results of research activities in its country of origin with reference to previous mentioned objectives of the WP, and identifies the most important topics and issues to be developed and deepened for the second meeting of Task1. The first Plenary meeting will give the opportunity to exchange research results and methodologies, to discuss the main issues in order to meet the objectives, and to select relevant common issues to be developed.

Development of selected issues will be based on bibliographical research, discussions and interviews with firms, public institutions and other relevant operators, information and experience exchanges within WP3 participants. The second Plenary meeting will put together further development of research activities, and the results of the activity brought on to develop the selected specific issues.

Deliverables

- D3** WP3 Report about the state of the art on the basis of meetings minutes, included bibliographical analysis and special part collecting reports on selected relevant issues. The Report give also a basic support to EU for WTO negotiations process.
- D4B** Part 3 of the preliminary working document on WTO's negotiations

Milestones and expected results

- M6 - First Meeting (month n.9)
- M13 - Second Meeting (month n.16)
- M17 - deliver of the Report about the state of the art with bibliography and selected relevant issues (D3) (month n.18)

TASK 1 – ANALYTICAL WORKPACKAGES

WP 4 - LINK BETWEEN OLP AND CONSUMERS AND CITIZENS

Phase : task 1**Start date :** Month 3**Completion date :** Month 18**Partner responsible:** 11; assistant: 2**Person-months:** 1: 1,2; 2:1,4; 3:0,9; 4:2,0; 5:1,1; 6:0,7; 7:0,7; 8:0,7; 9:2,6; 10:1,6; 11:1,8; 12:1,0; 13:1,7; 14:2,0; 15:1,6 (total:21,1)**Objectives**

- Analysis of theoretical and analytical tools and methods used in the analysis of OLP consumer
- Characteristics and evolution of consumers' habits and perceptions; quantitative and qualitative analysis, gastronomic traditions, case-studies: is the consumer of typical products a typical consumer?
- Role of information transmission (labels, information campaigns, promotional activities, advertising, etc.), education, formation, training
- Marketing of OLP and consumers perception and expectations on OLP: analysis of the consumers' behaviour within different marketing channels and distribution systems ; effect of new promotional and marketing methods
- Policies: analysis of public policies affecting the link between OLP and consumers-citizens, with special reference to EU food safety and hygiene regulations, and quality policy; international trade liberalisation, WTO
- Assessing the legal protection of OLP with regards to EU and WTO regulations and providing EU with diagnosis of negotiations basis
- Identifying needs for further research

Methodology

Two Plenary meetings are planned.

In the first meeting each participant group brings experiences and results of research activities in its country of origin with reference to previous mentioned objectives of the WP, and identifies the most important topics and issues to be developed and deepened for the second meeting of Task1. The first Plenary meeting will give the opportunity to exchange research results and methodologies, to discuss the main issues in order to meet the objectives, and to select relevant common issues to be developed.

Development of selected issues will be based on bibliographical research, discussions and interviews with firms, public institutions and other relevant operators, information and experience exchanges within WP4 participants. The second Plenary meeting will put together further development of research activities, and the results of the activity brought on to develop the selected specific issues.

Deliverables

D4 WP4 Report about the state of the art on the basis of meetings minutes, included bibliographical analysis and special part collecting reports on selected relevant issues. The Report give also a basic support to EU for WTO negotiations process.

D4B Part 4 of the preliminary working document on WTO's negotiations

Milestones and expected results

- M7 - First Meeting (month n.9)
- M14 - Second Meeting (month n.16)
- M18 - Deliver of the Report about the state of the art with bibliography and selected relevant issues (D4) (month n.18)

TASK 2 – OPERATIONAL WORKPACKAGES

WP 5 - CHARACTERISTICS, EVOLUTION, PROBLEMS AND OPPORTUNITIES FOR OLPS

Phase : TASK 2

Start date : Month 19

Completion date : Month 28

Partner responsible: 5; assistant: 9

Person-months: 1:1,2; 3:0,9; 4:2,0; 5:1,1; 6:0,7; 7:1,3; 8:1,4; 9:1,7; 10:0,8; 11:0,9; 12:1,0; 13:1,7; 15:1,6 (total: 16,4)

Objectives

- systematisation of the knowledges on OLPs definitions, characteristics, regulations, and on their links with production and marketing systems, with rural development, and with the consumer/citizen
- systematisation of methodological approaches to OLPs products
- identification of the success and failure conditions for OLPs, and of main threats and resources of the OLPs in the framework of economic globalisation
- dissemination of first results of the Concerted Action, by providing documents to WP8
- Assessing the legal protection of OLP with regards to EU and WTO regulations and providing EU with diagnosis of negotiations basis
- Identifying needs for further research

Methodology

The co-ordinator of WP5, together with assistant partners, and the responsible of each WP of Task1 and/or their assistant partners, will produce a synthetic document on the topic assigned, based on the discussions made during the meetings and work of Task1.

One meeting is planned at month n.26 in order to discuss these documents, and to give indications to Report on OLP characteristics, evolution, problems and opportunities.

Responsibles (and their assistants) of WP5 prepare a final Report on OLP characteristics, evolution, problems and opportunities, on the basis of work done and meeting discussions (months 27-28).

Deliverables

- **D5** WP5 Report on OLP characteristics, evolution, problems and opportunities

Milestones and expected results

- M19 - Meeting (month n.26)
- M21 - Deliver of the WP5 Report (month n.28)

TASK 2 – OPERATIONAL WORKPACKAGES

WP 6 - POLICIES EVALUATION

Phase:Task2

Start date: Month 19

Completion date : Month 28

Partner responsible: 8; assistant: 14

Person-months: 1:1,2; 2:1,4; 3:0,9; 5:1,6; 6:0,7; 7:1,3; 8:2,1; 9:0,9; 10:1,6; 11:0,9; 12:1,0; 13:0,9; 14:2,0; 15:1,6
(total: 18,2)

Objectives

- Systematisation of different typologies of public policies at various levels concerning PDO-PGI and other OLPs
- systematisation of the knowledges on the effects of public policies at various levels concerning PDO-PGI and other OLPs: effects of legal protection, financial support and public promotional initiatives on production and marketing systems, on competition policy, on rural development, on consumers/citizens concerns and expectations;
- identification of innovative European policies at local level for strengthen marketing and production systems OLPs products, and their links to rural development and consumer/citizen
- systematisation of methodological approaches to OLPs products policy evaluation
- provide tools for an assessment of public policies at various levels concerning PDO-PGI and other OLPs
- dissemination of first results of the Concerted Action, by providing documents to WP8
- Assessing the legal protection of OLP with regards to EU and WTO regulations and providing EU with diagnosis of negotiations basis
- Identifying needs for further research

Methodology

The Responsible of WP6, together with assistant Partner and the Responsible of each WP of Task1 and/or their assistant Partners, will produce a synthetic document on the topic assigned, based on the discussions made during the meetings and work of Task1.

One meeting is planned at month n.26 in order to discuss these documents, and to give indications to Report on Policies effects on OLPs.

Responsibles (and their assistants) of WP6 prepare a final Report on Policies effects on OLPs., on the basis of work done and meeting discussions (months 27-28).

Deliverables

- **D6** WP6 Report on Policies effects on OLPs

Milestones and expected results

- M20 - Meeting (month n.26)
- M22 - Deliver of the WP6 Report (month n.28)

TASK 3 – SYNTHESIS AND RECOMMENDATIONS

WP 7 - SYNTHESIS AND RECOMMENDATIONS

Phase : task3

Start date: Month 29

Completion date : Month 36

Partner responsible: 1; assistant: 13, 5, 7, 8

Person-months: 1:4,9; 2:1,4; 3:1,8; 4:2,0; 5:2,7; 6:1,5; 7:2,6; 8:3,6; 9:2,6; 10:2,4; 11:1,8; 12:2,0; 13:2,6; 14:2,0; 15:3,2 (total:37,1)

Objectives

WP7 has the aim of underlining the key topics on OLP agri-food products and the implications for EC policies implementation, with special reference to WTO international trade negotiations.

In particular:

- provide EC a clear view on the role of OLPs on rural development, sustainability, and consumer/citizen welfare
- provide EC a clear view on the impact of the implemented policies
- provide relevant recommendations to EC in order to better prepare and support the negotiation process in the framework of WTO Round regarding the protection and promotion of OLPs
- Assessing the legal protection of OLP with regards to EU and WTO regulations and providing EU with diagnosis of negotiations basis
- Identifying needs for further research
- dissemination of final results of the Concerted Action, by providing documents to WP8

Methodology

The Steering Committee will meet together with the Responsibles of Task2 WPs (WP5 and WP6), and with Responsible (and assistant) of Task3 (WP7) in order to prepare Task3.

The Final International Seminar will consist in contributions made by the participants on the basis of the WP1 to WP6, and in invited lectures prepared in collaboration with known experts in the concerned field, who will have to read the reports from the WorkPackages and deliver their points of views.

Final document with recommendation Key topics on OLPs and implications for EC policies implementation, with special reference to WTO international trade negotiations (month n.36).

Deliverables

- **D7** Meeting Proceedings
- **D8** Final recommendation Key topics on OLPs and implications for EC policies implementation, with special reference to WTO international trade negotiations

Milestones and expected results (Max.900 characters/200 words)

- M23 - Final Seminar (month n.34)
- M24 - Deliver of the WP7 Report (Meeting Proceedings) (month n.36)
- M25 - Deliver of Final recommendation Key topics on OLP (month n.36)

TASK 4 – INFORMATION AND DISSEMINATION

WP 8 - INFORMATION AND DISSEMINATION

Phase : Task 4**Start date:** Month 3**Completion date :** Month 36**Partner responsible:** 1**Person-months:** 1:9,9; 5:1,1; 7:1,3; 8:0,7 (total: 13,0)**Objectives**

The objective of Task4 (WP8) is twofold:

- a) supporting activity of other tasks by implementing an electronic system of information exchange among Partners;
- b) dissemination of results of DOLPHINS Concerted Action to academics, policy-makers, public institutions, consumers and citizens, firms and other institutions.

This Task will accompany the activity of DOLPHINS Concerted Action along the whole period (Three years).

Methodology

Task4 will have a service role for the whole Concerted Action, in order to provide a tool to collect works and databases, and to ease exchanges of documents, researches results, suggestions and opinions among partners. The tool, in the form of a Web Page, will have also an important dissemination role (in particular during Task2 e Task3), in order to make results of Concerted Action circulate within academics, policy-makers, public institutions, consumers and citizens, firms and other institutions involved in OLPs.

Task4 will work in parallel with Tasks 1, 2 and 3, on the basis of guidelines formulated during Task0 by the Steering Committee.

The main instrument implemented by WP8 is the DOLPHINS Web Page, which will contain a restricted area, aiming at supporting information and researches exchanges among participants to Concerted Action, and a public area where the results of the Action will be accessible. In particular, a Synthesis of results of Partners' research activities, a Database on researches on OLPs, a Database on publications on OLPs, a Database on Research Institutions working on OLPs and Documents produced by WorkPackages during the action will be put on-line on the Web Page DOLPHINS.

In order to build Databases, the Responsible and assistants will collect from each Partner information about researches and publications on OLPs, and information on Research Institutions working on OLPs. Information must be given by each partner according to a track record given by Responsible. The Web Page will collect also DOLPHINS meetings proceedings and other publications of the researchers involved in the action.

Deliverables

- **D9** DOLPHINS Web Site
- **D10** Database on researches on OLPs
- **D11** Database on publications on OLPs
- **D12** Database on Research Institutions working on OLPs

Milestones and expected results

- M3 - Construction and implementation of DOLPHINS Web Site (month n.6)
- M8 - Database on researches on OLPs (month n.12)
- M9 - Database on publications on OLPs (month n.12)
- M10 - Database on Research Institutions working on OLPs (month n.12)

3. ROLE OF PARTICIPANTS

PARTNER 1 (CO-ORDINATOR) - INRA-UREQUA

INRA (National Institute for Agronomic Research) – UREQUA (Research Unit for Agro-food Qualifications)

8 avenue Laennec, 72 000 Le Mans, France
 Tel: 33 (0) 243 399 400 - Fax: 33 (0) 243 399 409
 Email : gsantoro@inra.univ-lemans.fr

Scientific team

Pr. Bertil Sylvander, Ph. 243 399 401, E-mail: bsylvander@inra.univ-lemans.fr (Head of the Research Unit)
 Dr. Bernard Lassaut, Ph. 243 399 408, E-mail: blassaut@inra.univ-lemans.fr

Contractual links to other participants :

Partner n°1 is link to Partner 2 (INRA-ETIQ), 3,(INRA-LRDE), 4 (CEDRAN). All the partner are Member.

Objectives

In the projects will cover three interconnected areas (i) operator's strategies and supply chains for Specific Quality Products, (ii) interaction supply-demand : markets dynamics and interactive marketing and (iii) influence of standards on firm's management and collective working out of standards in actor's systems (local and supply chains).

Workplan

Partner 1 will be involved as responsible of the WP0. It will organise a meeting with the Steering Committee and the Responsibles of WPs of Task1 (WP1, WP2, WP3 and WP4) in order to:

- fix important dates and start operation activities of Task1 (WP1, WP2, WP3 and WP4)
- create a system of links among Partners and a system of results dissemination (guidelines for WP8 - Task4)

Partner 1 will also participate to WP1, WP2, WP3, WP4, WP5, WP6.

Partner 1 will be responsible for WP7 where the Steering Committee will meet together with the Responsibles of Task2 WPs (WP5 and WP6), and with Responsible (and assistant) of Task3 (WP7) in order to prepare Task3.

Partner 1 will be responsible for WP8 where Task4 will have a service role for the whole Concerted Action, in order to provide a tool to collect works and databases, and to ease exchanges of documents, researches results, suggestions and opinions among partners. The tool, in the form of a Web Page, will have also an important dissemination role (in particular during Task2 e Task3), in order to make results of Concerted Action circulate within academics, policy-makers, public institutions, consumers and citizens, firms and other institutions involved in OLPs. Task4 will work in parallel with Tasks 1, 2 and 3, on the basis of guidelines formulated during Task0 by the Steering Committee.

The main instrument implemented by WP8 is the DOLPHINS Web Page, which will contain a restricted area, aiming at supporting information and researches exchanges among participants to Concerted Action, and a public area where the results of the Action will be accessible. In particular, a Synthesis of results of Partners' research activities, a Database on researches on OLPs, a Database on publications on OLPs, a Database on Research Institutions working on OLPs and Documents produced by WorkPackages during the action will be put on-line on the Web Page DOLPHINS.

In order to build Databases, the Responsible and assistants will collect from each Partner informations about researches and publications on OLPs, and informations on Research Institutions working on OLPs. These informations must be given by each partner according to a track record given by Responsible. The Web Page will collect also DOLPHINS meetings proceedings and other publications of the researchers involved in the action.

Person-months

WP0	2,5	WP5	1,2
WP1	1,2	WP6	1,2
WP2	1,2	WP7	4,9
WP3	1,2	WP8	9,9
WP4	1,2		

Deliverables: as responsible

- WP0 **D0 (END MONTH 2)** Guidelines with activities programme and definition of organisational aspects
- WP7 **D7 (END MONTH 36)** Meeting Proceedings
- WP7 **D8 (END MONTH 36)** Final recommendation Key topics on OLPs and implications for EC policies implementation, with special reference to WTO international trade negotiations
- WP8 **D9 (END MONTH 6)** DOLPHINS Web Site
- WP8 **D10 (END MONTH 12)** Database on researches on OLPs
- WP8 **D11 (END MONTH 12)** Database on publications on OLPs
- WP8 **D12 (END MONTH 12)** Database on Research Institutions working on OLPs

Deliverables: as partner

- WP1 **D1 (END MONTH 18)** Report about the state of the art on the basis of meetings minutes, included bibliographical analysis and special part collecting reports on selected relevant issues
- WP2 **D2 (END MONTH 18)** Report about the state of the art on the basis of meetings minutes, included bibliographical analysis and special part collecting reports on selected relevant issues
- WP3 **D3 (END MONTH 18)** Report about the state of the art on the basis of meetings minutes, included bibliographical analysis and special part collecting reports on selected relevant issues
- WP4 **D4 (END MONTH 18)** Report about the state of the art on the basis of meetings minutes, included bibliographical analysis and special part collecting reports on selected relevant issues
D4B (END of month 12) : preliminary working document on WTO's negotiations on OLP
- WP5 **D5 (END MONTH 28)** Report on OLP characteristics, evolution, problems and opportunities
- WP6 **D6 (END MONTH 28)** Report on Policies effects on OLPs

PARTNER 2 (MEMBER)- INRA-ETIQ**Institut National de Recherches Agronomiques (INRA) - Unité Économie et Sociologie Rurales (ESR)**

Equipe : Emploi, Territoire, Innovation, Qualité (ETIQ)

BP 27 - 31326 CASTANET-TOLOSAN, France

Ph 33 0561285349 fax 33 0561285372

Scientific teamDR. Gilles Allaire, Ph 33 0561285086, E-mail: allaire@toulouse.inra.fr**Objectives**

The INRA team ETIQ («Emploi, Territoire, Innovation, Qualité») focuses on rural employment issues and has been involved in the evaluation of the effects of agricultural and rural policies (early retirement, local environmental project financed by EU and national fund).

In these areas of research, Dr Gilles Allaire is researching on changes competencies at private, collective and public levels For his competence He will provide a link between problem related to innovation and territory with the OLP's.

Contractual links to other participants :

Member of partner 1 (INRA UREQUA) and he is link with partner 3,(INRA-LRDE), 4 (CEDRAN) like member

Workplan

Partner 2 will be assistant in WP4 where two Plenary meetings are planned.

In the first meeting each participant group brings experiences and results of research activities in its country of origin with reference to previous mentioned objectives of the WP, and identifies the most important topics and issues to be developed and deepened for the second meeting of Task1. The first Plenary meeting will give the opportunity to exchange research results and methodologies, to discuss the main issues in order to meet the objectives, and to select relevant common issues to be developed.

Development of selected issues will be based on bibliographical research, discussions and interviews with firms, public institutions and other relevant operators, information and experience exchanges within WP4 participants.

The second Plenary meeting will put together further development of research activities, and the results of the activity brought on to develop the selected specific issues.

Partner 2 will also participate in WP3, WP6, WP7.

Person-months

WP0		WP5	1,2
WP1		WP6	1,4
WP2		WP7	1,4
WP3	1,4	WP8	
WP4	1,4		

Deliverables : as partner

WP3 **D3 (END MONTH 18)** Report about the state of the art on the basis of meetings minutes, included bibliographical analysis and special part collecting reports on selected relevant issues

WP4 **D4 (END MONTH 18)** Report about the state of the art on the basis of meetings minutes, included bibliographical analysis and special part collecting reports on selected relevant issues

WP6 **D6 (END MONTH 28)** Report on Policies effects on OLPs

WP7 **D7 (END MONTH 36)** Meeting Proceedings

WP7 **D8 (END MONTH 36)** Final recommendation Key topics on OLPs and implications for EC policies implementation

PARTNER 3 (MEMBER)- INRA-LRDE**INRA (National Institute for Agronomic Research) - LRDE (Research Unit on Development of Livestock Activities)**

Quartier Grossetti, 20250 Corte, France

Ph : 33 (0) 495 451 509 - Fax : 33 (0) 495 461 181

Scientific team

Dr François Casabianca

Ph : 0495 451511 E-mail : fca@corte.inra.fr

Dr Jean-Antoine Prost

Ph : 0495 451506 E-mail : jap@corte.inra.fr**Objectives**

LRDE is a part of INRA's department on Agrarian Systems and Development (SAD). The unit was created in 1979 and consists in 17 employees all based in Corsica as the main working area. The scientific project of the unit focuses on the specific roles of technical changes on emerging processes of organisation of local actors within the agrarian system. It is structured in three main orientations : (i) collective management of local animal genetic resources, (ii) territorial qualification of typical products (iii) environmental stakes of pastoral livestock activities.

Contractual links to other participants :

Member of partner 1 (INRA UREQUA) and he is link with partner 2, (INRA-ETIQ), 4 (CEDRAN) like member.

Workplan

Partner 3 is responsible for WP1 where two plenary meetings are planned.

In the first meeting each participant group brings experiences and results of research activities in its country of origin with reference to previous mentioned objectives of the WP, and identifies the most important topics and issues to be developed and deepened for the second meeting of Task1. The first Plenary meeting will give the opportunity to exchange research results and methodologies, to discuss the main issues in order to meet the objectives, and to select relevant common issues to be developed.

Development of selected issues will be based on bibliographical research, discussions and interviews with firms, public institutions and other relevant operators, information and experience exchanges within WP1 participants.

The second Plenary meeting will put together further development of research activities, and the results of the activity brought on to develop the selected specific issues.

Partner 3 will also participate in WP0, WP2, WP3, WP4, WP5, WP6, WP7.

Person-months

WP0	0,9	WP5	0,9
WP1	0,9	WP6	0,9
WP2	0,9	WP7	1,8
WP3	0,9	WP8	
WP4	0,9		

Deliverables as responsible

WP1 **D1 (END MONTH 18)** report of about the state of the art on the basis of meetings minutes, included bibliographical analysis and special part collecting reports on selected relevant issues

Deliverables as partner

WP2 **D2 (END MONTH 18)** Report about the state of the art on the basis of meetings minutes, included bibliographical analysis and special part collecting reports on selected relevant issues

WP3 **D3 (END MONTH 18)** Report about the state of the art on the basis of meetings minutes, included bibliographical analysis and special part collecting reports on selected relevant issues

WP4 **D4 (END MONTH 18)** Report about the state of the art on the basis of meetings minutes, included bibliographical analysis and special part collecting reports on selected relevant issues

WP5 **D5 (END MONTH 28)** Report on OLP characteristics, evolution, problems and opportunities

WP6 **D6 (END MONTH 28)** Report on Policies effects on OLPs

WP7 **D7 (END MONTH 36)** Meeting Proceedings

WP7 **D8 (END MONTH 36)** Final recommendation Key topics on OLPs and implications for EC policies implementation, with special reference to WTO international trade negotiations

PARTNER 4 (MEMBER) - CEDRAN**University of Nantes – CEDRAN (Research Center for agro-food law)****IQUABIAN**

B.P. 82225 - 44322 Nantes Cedex 3

Tel : 02 51 78 55 51- Fax : 02 51 78 55 50

Email : nathalie.belloccq@droit.univ-nantes.fr**Scientific team**Pr. Louis Lorvellec, Ph. 33 (0) 251 785 552, E-mail: Louis.Lorvellec@droit.univ-nantes.fr

(Head of the Research Unit)

Dr. J.P. Doussin, Ph. 33 (0) 251 785 553, E-mail: doussin@aol.com**Contractual links to other participants :**

Member of partner 1 (INRA UREQUA) and he is link with partner 2,(INRA-ETIQ), 3 (INRA-LRDE) like member

Objectives and Workplan

CEDRAN as partner 4 will put its competencies in the action through being responsible as assistant of the WP1, and WP7 which will contribute to build up the basis of the action, as technical, economic and legal aspect are treated, as far as product typicity is concerned.

Partner 4 will also be responsible for Deliverable 4B, consisting of a short working document on WTO's negotiations on OLP.

Partner 4 will also participate in WP4, WP5, WP7.

Person-months

WP0		WP5	2,0
WP1	2,0	WP6	
WP2		WP7	2,0
WP3		WP8	
WP4	2,0		

Deliverables as responsible

WP1 **D1 (END MONTH 18)** Report about the state of the art on the basis of meetings minutes, included bibliographical analysis and special part collecting reports on selected relevant issues

D4B (END MONTH 12) : Short preliminary document on WTO's negotiations

Deliverables as partner

WP4 **D4 (END MONTH 18)** Report about the state of the art on the basis of meetings minutes, included bibliographical analysis and special part collecting reports on selected relevant issues

WP5 **D5 (END MONTH 28)** Report on OLP characteristics, evolution, problems and opportunities

WP7 **D7 (END MONTH 36)** Meeting Proceedings

WP7 **D8 (END MONTH 36)** Final recommendation Key topics on OLPs and implications for EC policies implementation, with special reference to WTO international trade negotiations

PARTNER 5 (PRINCIPAL CONTRACTOR) - UNIPR**Istituto di Economia Agraria e Forestale - Università di Parma**

Via F.J. Kennedy , 6 - 43100 Parma - ITALIA

Tel: 39 0521 902414 - Fax: 39 0521 902498

Scientific teamProf. Corrado Giacomini Ph. 0521 902414 E-mail: giacomo@unipr

(Head of the Department and of the Research Unit)

Prof. Elisa Montresor, Ph 045-8098236;

E-mail: elisam@giuliani.univr.it

Dr. Filippo Arfini; Ph. 0521-902496;

E-mail: F_arfini@unipr.it

Dr. Cristina Mora; Ph. 0521-902383;

E-mail: Cris mora@unipr.it

Dr. Cecilia Mancini; Ph. 0521-902383;

E-mail: Cmancini@unipr.it**Contractual links to other participants :**

He his Contractor of Partner 6 (CRPA) and Partner 7 (DSE)

Objectives

The contribution will regard the articulation of rural and agricultural development at territorial level, particularly the relationships between the processes internal to the primary sector and the rest of socio-economic context. Also the research team will provide experience related to the organisation of the market of some famous OLPs

Workplan

Partner 5 will be Assistant for WP0 where one meeting with the co-ordinator, the Steering Committee and the Responsibles of WPs of Task1 (WP1, WP2, WP3 and WP4) will be held in order:

- to fix important dates and start operation activities of Task1 (WP1, WP2, WP3 and WP4)
- to create a system of links among Partners and a system of results dissemination (guidelines for WP8 - Task4).

Partner 5 will be responsible for WP5 where, together with assistant partners, and the Responsibles of each WP of Task1 and/or their assistant partners, will produce a synthetic document on the topic assigned, based on the discussions made during the meetings and work of Task1.

One meeting is planned at month n.26 in order to discuss these documents, and to give indications to Report on OLP characteristics, evolution, problems and opportunities. Therefore it will prepare a final Report on OLP characteristics, evolution, problems and opportunities, on the basis of work done and meeting discussions (months 27-28).

Partner 5 will also participate in WP1, WP2, WP3, WP4, WP6, WP7, WP8.

Person-months

WP0	1,1	WP5	1,1
WP1	1,1	WP6	1,6
WP2	2,2	WP7	2,7
WP3	1,1	WP8	1,1
WP4	1,1		

Deliverables as responsible

WP0 **D0 (END MONTH 2)** Guidelines with activities programme and definition of organisational aspects

WP5 **D5 (END MONTH 28)** Report on OLP characteristics, evolution, problems and opportunities

Deliverable as partner

WP1 **D1 (END MONTH 18)** Report about the state of the art on the basis of meetings minutes, included bibliographical analysis and special part collecting reports on selected relevant issues

WP2 **D2 (END MONTH 18)** Report about the state of the art on the basis of meetings minutes, included bibliographical analysis and special part collecting reports on selected relevant issues

WP3 **D3 (END MONTH 18)** Report about the state of the art on the basis of meetings minutes, included bibliographical analysis and special part collecting reports on selected relevant issues

- WP4 **D4 (END MONTH 18)** Report about the state of the art on the basis of meetings minutes, included bibliographical analysis and special part collecting reports on selected relevant issues
D4B (END of month 12) : preliminary working document on WTO's negotiations on OLP
- WP6 **D6 (END MONTH 28)** Report on Policies effects on OLPs
- WP7 **D7 (END MONTH 36)** Meeting Proceedings
- WP7 **D8 (END MONTH 36)** Final recommendation Key topics on OLPs and implications for EC policies implementation, with special reference to WTO international trade negotiations
- WP8 **D9 (END MONTH 6)** DOLPHINS Web Site
- WP8 **D10 (END MONTH 12)** Database on researches on OLPs
- WP8 **D11 (END MONTH 12)** Database on publications on OLPs
- WP8 **D12 (END MONTH 12)** Database on Research Institutions working on OLPs

PARTNER 6 (MEMBER) - CRPA**Centro Ricerche Produzioni Animali SPA (CRPA)**

Research Centre for Animal Production, Reggio Emilia, Italy

Tel: 39 0522 496999 - FAX 93 0522 435142

Scientific team

Kees De Roest

E-mail K.De.Roest@crpa.it

Franco Torelli

Tel. 0039 02522 556439

Eugenio Corradini

E.Corradini@crpa.it

Alberto Menghi

A.Menghi@crpa.it

Contractual links to other participants :

It is linked to Partner 5 (UNIPR) and Partner 7 (DSE) like member

Objectives

The Research Centre for Animal Production (C.R.P.A.) has been founded as a public institute in 1971 with the specific task to co-ordinate research and extension service programs on animal production in the region Emilia-Romagna. During the eighties the Centre started to expand its activities carrying out research programs itself. Most of the activities of the Centre is applied research directed to farmers and the processing industry. Research results are being disseminated by national agricultural reviews and own institute leaflets. The Centre employs 30 researchers, 10 technicians and 5 persons involved in administration and is organised in eight research units: agronomy, environment, economics, livestock production (cattle and pig husbandry), software development, machinery and farm buildings.

In the present research proposal the Economics Research Unit is involved.

Workplan

Partner 6 will be assistant in WP2 where the Responsible, together with assistant Partner and the Responsible of each WP of Task1 and/or their assistant Partners, will produce a synthetic document on the topic assigned, based on the discussions made during the meetings and work of Task1.

One meeting is planned at month n.26 in order to discuss these documents, and to give indications to Report on Policies effects on OLPs.

Responsibles (and their assistants) of WP6 prepare a final Report on Policies effects on OLPs., on the basis of work done and meeting discussions (months 27-28).

Partner 6 will participate also in WP1, WP4, WP5, WP6, WP7.

Person-months

WP0		WP5	0,7
WP1	0,7	WP6	0,7
WP2	0,7	WP7	1,5
WP3		WP8	
WP4	0,7		

Deliverables as responsible

WP2 **D2 (END MONTH 18)** Report about the state of the art on the basis of meetings minutes, included bibliographical analysis and special part collecting reports on selected relevant issues

Deliverables as member

WP1 **D1 (END MONTH 18)** Report about the state of the art on the basis of meetings minutes, included bibliographical analysis and special part collecting reports on selected relevant issues

WP4 **D4 (END MONTH 18)** Report about the state of the art on the basis of meetings minutes, included bibliographical analysis and special part collecting reports on selected relevant issues

WP5 **D5 (END MONTH 28)** Report on OLP characteristics, evolution, problems and opportunities

WP6 **D6 (END MONTH 28)** Report on Policies effects on OLPs

WP7 **D7 (END MONTH 36)** Meeting Proceedings

WP7 **D8 (END MONTH 36)** Final recommendation Key topics on OLPs and implications for EC policies implementation, with special reference to WTO international trade negotiations

PARTNER 7 (MEMBER) - DSE
Dipartimento di Scienze Economiche - Università di Firenze
 Via Curtatone, 1 - 50123 Firenze - ITALIA
 Tel: 39 055 2710441 - Fax: 39 055 2710424

Contractual links to other participants :

It is linked to Partner 5 (UNIPR).

Scientific team

Prof. Alessandro Pacciani; Ph. 055 2710447; E-mail: apacciani@cce.unifi.it (Head of the Research Unit)
 Dr. Andrea Marescotti; Ph. 055-2710441; E-mail: marescot@facec.cce.unifi.it
 Dr. Giovanni Belletti; Ph. 055-2710425; E-mail: belletti@facec.cce.unifi.it
 Dr. Silvia Scaramuzzi; Ph. 055-2710427; E-mail: scara@facec.cce.unifi.it

Objectives

The team will contribute to the action providing the results of its researches on OLPs. In particular topics covered are: a) OLP consumers' behaviour and evolution; b) analysis of OLP supply chains and marketing channels; c) role of public institutions in the promotion of OLP within rural development strategies. In order to obtain more information about problems related to quality issues and certification activities Partner 7 will be supported by ARSIA (Agenzia Regionale per lo Sviluppo e l'Innovazione in Agricoltura, Regione Toscana, Firenze, Italy). This public Agency supports the certification of many important PDO/PGI products in Tuscany, and is involved in supporting Regione Toscana in the implementation of rural development policies.

Workplan

Partner 7 is Responsible for WP 3 where two plenary meetings are planned.

In the first meeting each participant group brings experiences and results of research activities in its country of origin with reference to previous mentioned objectives of the WP, and identifies the most important topics and issues to be developed and deepened for the second meeting of Task1. The first Plenary meeting will give the opportunity to exchange research results and methodologies, to discuss the main issues in order to meet the objectives, and to select relevant common issues to be developed.

Development of selected issues will be based on bibliographical research, discussions and interviews with firms, public institutions and other relevant operators, information and experience exchanges within WP3 participants.

The second Plenary meeting will put together further development of research activities, and the results of the activity brought on to develop the selected specific issues

Partner 7 is assistant for WP0.

The Final Seminar will consist in contributions made by the participants on the basis of the WP1 to WP6, and in invited lectures prepared in collaboration with known experts in the concerned field, who will have to read the reports from the WorkPackages and deliver their points of views.

Final document with recommendation Key topics on OLPs and implications for EC policies implementation, with special reference to WTO international trade negotiations (month n.36).

Partner 7 will also participate in WP1, WP2, WP4, WP5, WP6, WP7, WP8.

Person-months

WP0	1,3	WP5	1,3
WP1	0,7	WP6	1,3
WP2	1,3	WP7	2,6
WP3	2,6	WP8	1,3
WP4	0,7		

Deliverables as responsible

WP0 **D0 (END MONTH 2)** Guidelines with activities programme and definition of organisational aspects

WP3 **D3 (END MONTH 18)** WP3 Report about the state of the art on the basis of meetings minutes, included bibliographical analysis and special part collecting reports on selected relevant issues

Deliverables as member

- WP1 **D1 (END MONTH 18)** WP1 Report about the state of the art on the basis of meetings minutes, included bibliographical analysis and special part collecting reports on selected relevant issues
- WP2 **D2 (END MONTH 18)** WP2 Report about the state of the art on the basis of meetings minutes, included bibliographical analysis and special part collecting reports on selected relevant issues
- WP4 **D4 (END MONTH 18)** WP4 Report about the state of the art on the basis of meetings minutes, included bibliographical analysis and special part collecting reports on selected relevant issues
D4B (END of month 12) : preliminary working document on WTO's negotiations on OLP
- WP5 **D5 (END MONTH 28)** WP5 Report on OLP characteristics, evolution, problems and opportunities
- WP6 **D6 (END MONTH 28)** WP6 Report on Policies effects on OLPs
- WP7 **D7 (END MONTH 36)** Meeting Proceedings
- WP7 **D8 (END MONTH 36)** Final recommendation Key topics on OLPs and implications for EC policies implementation, with special reference to WTO international trade negotiations
- WP8 **D9 (END MONTH 6)** DOLPHINS Web Site
- WP8 **D10 (END MONTH 12)** Database on researches on OLPs
- WP8 **D11 (END MONTH 12)** Database on publications on OLPs
- WP8 **D12 (END MONTH 12)** Database on Research Institutions working on OLPs

PARTNER 8 (PRINCIPAL CONTRACTOR) - ETHZ**Institut d'Economie Rurale de l'Ecole polytechnique fédérale de Zürich (ETHZ)**

ETH-Zentrum - 8092 Zürich - Switzerland

Tel 00 41 21 693 57 13 - Fax 00 41 21 693 57 17

Scientific team

Prof. Bernard Lehmann, Professor

Dr Dominique Barjolle, Senior researcher

Jean-Marc Chappuis, Junior researcher

Martine Dufour, External expert

Stéphane Boisseaux, External expert

Contractual links to other participants :

No contractual links.

Objectives

The Institute for Rural Economy of the Swiss Federal Institute of Technology Zürich is the largest research station for rural economy, agricultural policy and farming management in Switzerland. Researchers participating to this project are supervised by Prof. B. Lehmann, who leads the Chair of Economics of Farming, Agri-business and Rural Areas.

The IER team has both a deep knowledge of the economic literature concerning markets and institutions and an operational approach dedicated to the elaboration of tools of practical use for markets' operators and policy makers. It has carried out research regarding PDO and PGI products (programme FAIR).

Workplan

Partner 8 will be responsible for WP6 and, together with assistant Partner and the Responsible of each WP of Task1 and/or their assistant Partners, will produce a synthetic document on the topic assigned, based on the discussions made during the meetings and work of Task1.

One meeting is planned at month n.26 in order to discuss these documents, and to give indications to Report on Policies effects on OLPs.

Responsibles (and their assistants) of WP6 prepare a final Report on Policies effects on OLPs., on the basis of work done and meeting discussions (months 27-28)

Partner 8 will be assistant for WP0, where one meeting with the co-ordinator, the Steering Committee and the Responsibles of WPs of Task1 (WP1, WP2, WP3 and WP4) will be held in order:

- to fix important dates and start operation activities of Task1 (WP1, WP2, WP3 and WP4)
- to create a system of links among Partners and a system of results dissemination (guidelines for WP8 - Task4)

Partner 8 will participate in WP1, WP2, WP3, WP4, WP5, WP7, WP8.

Person-months

WP0	0,7	WP5	1,4
WP1	1,4	WP6	2,1
WP2	1,4	WP7	3,6
WP3	0,7	WP8	0,7
WP4	0,7		

Deliverables as responsible

WP0 **D0 (END MONTH 2)** Guidelines with activities programme and definition of organisational aspects

WP6 **D6 (END MONTH 28)** WP6 Report on Policies effects on OLPs

Deliverables as member

WP1 **D1 (END MONTH 18)** WP1 Report about the state of the art on the basis of meetings minutes, included bibliographical analysis and special part collecting reports on selected relevant issues

WP2 **D2 (END MONTH 18)** WP2 Report about the state of the art on the basis of meetings minutes, included bibliographical analysis and special part collecting reports on selected relevant issues

- WP3 **D3 (END MONTH 18)** WP3 Report about the state of the art on the basis of meetings minutes, included bibliographical analysis and special part collecting reports on selected relevant issues
- WP4 **D4 (END MONTH 18)** WP4 Report about the state of the art on the basis of meetings minutes, included bibliographical analysis and special part collecting reports on selected relevant issues
D4B (END of month 12) : preliminary working document on WTO's negotiations on OLP
- WP5 **D5 (END MONTH 28)** WP5 Report on OLP characteristics, evolution, problems and opportunities
- WP7 **D7 (END MONTH 36)** Meeting Proceedings
- WP7 **D8 (END MONTH 36)** Final recommendation Key topics on OLPs and implications for EC policies implementation, with special reference to WTO international trade negotiations
- WP8 **D9 (END MONTH 6)** DOLPHINS Web Site
- WP8 **D10 (END MONTH 12)** Database on researches on OLPs
- WP8 **D11 (END MONTH 12)** Database on publications on OLPs
- WP8 **D12 (END MONTH 12)** Database on Research Institutions working on OLPs

PARTNER 9 (PRINCIPAL CONTRACTOR) - TUM-PFM

Professur für Marktlehre der Agrar- und Ernährungswirtschaft

Technische Universität München - Weihenstephan – Alte Akademie 14 – D-85350 Freising – Germany

Tel: + 49 (0) 8161 71 3590 - Fax: + 49 (0) 8161 71 4536

Scientific team

Prof. Dr. Michael Besch

Phone (0) 8161 71 3591

E-mail: besch@weihenstephan.de

Dipl.-Ing. agr. Frank Thiedig

Phone (0) 8161 71 3575

E-mail: thiedig@weihenstephan.de

Dipl.-Ing. agr. Burkhard Schaer

Phone (0) 8161 71 3592

E-mail: schaer@weihenstephan.de**Contractual links to other participants :**

No contractual links.

Objectives

Since the foundation of the Department in 1984, the main emphasis of research is put on marketing of agricultural products and food. This leads to the following MISSION STATEMENT:

Marketing-Research for the Bavarian Agricultural and Foodstuff Economy under the aim to improve the marketing of agricultural commodities and food .”

Two main areas of research can be derived:

- Determining factors of consumer behaviour with regard to foodstuffs
- Organisation and Management of Marketing in the Agricultural Economy

These two main areas are applied, business-orientated and use the empirical research methods in social and economic science. They are meant to explain the determining factors of consumers' nutrition behaviour mainly regarding interesting cases in the Bavarian Agricultural and Foodstuff Economy on the one hand.

On the other hand we deal with the application of marketing conceptions in the Agriculture and Food area on three organisational levels: single-enterprises, co-operative and generic marketing.

The Professur für Marktlehre (PfM) will contribute their recent work to all tasks of the project. In the first task the PfM will provide the national legal frame work (WP 1: legal protection) and the German statistical data on OLP-products (as far as they exist). The main contribution of the PfM will be certainly the integration of the regional marketing research in WP 2 (link between OLP and local production system).

Planwork

Partner 9 will be assistant for the WP5 where together together with coordinator partner, and the Responsibles of each WP of Task1 and/or their assistant partners, will produce a synthetic document on the topic assigned, based on the discussions made during the meetings and work of Task1.

One meeting is planned at month n.26 in order to discuss these documents, and to give indications to Report on OLP characteristics, evolution, problems and opportunities.

Responsibles (and their assistants) of WP5 prepare a final Report on OLP characteristics, evolution, problems and opportunities, on the basis of work done and meeting discussions (months 27-28).

Partner 9 will also participate in WP1 WP2 WP3 WP4 WP6 WP7.

Person-months

WP0		WP5	1,7
WP1	0,9	WP6	0,9
WP2	0,9	WP7	2,6
WP3	0,9	WP8	
WP4	2,6		

Deliverables as responsible

WP5 D5 (END MONTH 28) WP5 Report on OLP characteristics, evolution, problems and opportunities

Deliverables as member

- WP1 **D1 (END MONTH 18)** WP1 Report about the state of the art on the basis of meetings minutes, included bibliographical analysis and special part collecting reports on selected relevant issues
- WP2 **D2 (END MONTH 18)** WP2 Report about the state of the art on the basis of meetings minutes, included bibliographical analysis and special part collecting reports on selected relevant issues
- WP3 **D3 (END MONTH 18)** WP3 Report about the state of the art on the basis of meetings minutes, included bibliographical analysis and special part collecting reports on selected relevant issues
- WP4 **D4 (END MONTH 18)** WP4 Report about the state of the art on the basis of meetings minutes, included bibliographical analysis and special part collecting reports on selected relevant issues
- WP6 **D6 (END MONTH 28)** WP6 Report on Policies effects on OLPs
- WP7 **D7 (END MONTH 36)** Meeting Proceedings
- WP7 **D8 (END MONTH 36)** Final recommendation Key topics on OLPs and implications for EC policies implementation, with special reference to WTO international trade negotiations

PARTNER 10 (PRINCIPAL CONTRACTOR) - SIA-DGA**Unidad De Economía Agraria – Servicio de Investigación Agroalimentaria**

Diputación General de Aragón – Apartado 727 – 50080 Zaragoza – SPAIN

Tel: 34 976 576361 – Fax 34 976 575501

Scientific team

Dr. Luis Miguel Albisu Ph. 34- 976- 576361

E-mail albisu@mizar.csic.es

Dr. Liliana Meza; Ph. 34-976-576361;

E-mail: meza@mizar.csic.es

Dr. Ana Isabel Sanjuan; Ph. 34-948-169394

Contractual links to other participants :

No contractual links.

Objectives

The “Unidad de Economía Agraria” is a department dealing with agricultural economics which is part of a research institute (Servicio de Investigación Agraria) depending from the regional government (Diputación General de Aragón). It is an institution fully dedicated to undertake research and with close linkages with the regional agrofood system. In Spain it is considered as one of the best research institutes focused in agriculture.

Workplan

Partner 10 is responsible for WP2 where two plenary meetings are planned.

In the first meeting each participant group brings experiences and results of research activities in its country of origin with reference to previous mentioned objectives of the WP, and identifies the most important topics and issues to be developed and deepened for the second meeting of Task1. The first Plenary meeting will give the opportunity to exchange research results and methodologies, to discuss the main issues in order to meet the objectives, and to select relevant common issues to be developed.

Development of selected issues will be based on bibliographical research, discussions and interviews with firms, public institutions and other relevant operators, information and experience exchanges within WP2 participants.

The second Plenary meeting will put together further development of research activities, and the results of the activity brought on to develop the selected specific issues.

Partner 10 also participate in WP0, WP1, WP3, WP4, WP5, WP6, WP7.

Person-months

WP0	0,8	WP5	0,8
WP1	0,8	WP6	1,6
WP2	1,6	WP7	2,4
WP3	0,8	WP8	
WP4	1,6		

Deliverables as responsible

WP2 **D2 (END MONTH 18)** WP2 Report about the state of the art on the basis of meetings minutes, included bibliographical analysis and special part collecting reports on selected relevant issues

Deliverables as member

WP0 **D0 (END MONTH 2)** Guidelines with activities programme and definition of organisational aspects

WP1 **D1 (END MONTH 18)** WP1 Report about the state of the art on the basis of meetings minutes, included bibliographical analysis and special part collecting reports on selected relevant issues

WP3 **D3 (END MONTH 18)** WP3 Report about the state of the art on the basis of meetings minutes, included bibliographical analysis and special part collecting reports on selected relevant issues

WP4 **D4 (END MONTH 18)** WP4 Report about the state of the art on the basis of meetings minutes, included bibliographical analysis and special part collecting reports on selected relevant issues

WP5 **D5 (END MONTH 28)** WP5 Report on OLP characteristics, evolution, problems and opportunities

WP6 **D6 (END MONTH 28)** WP6 Report on Policies effects on OLPs

WP7 **D7 (END MONTH 36)** Meeting Proceedings

WP7 **D8 (END MONTH 36)** Final recommendation Key topics on OLPs and implications for EC policies implementation, with special reference to WTO international trade negotiations

PARTNER 11 (PRINCIPAL CONTRACTOR) - UNEW
Department of Agricultural Economics and Food Marketing (AEFM)
University of Newcastle, Newcastle upon Tyne NE1 7RU, UNITED KINGDOM
Tel: 44 191 222 6900 - Fax: 44 191 222 6720

Scientific team

Dr. Mitchell Ness Ph. 0191 222 6928 E-mail: Mitchell.Ness@ncl.ac.uk
Ms Angela Tregear Ph. 0191 222 8886 E-mail: a.e.j.tregear@ncl.ac.uk

Contractual links to other participants :

No contractual links.

Objectives

The Department of Agricultural Economics and Food Marketing is one of the largest of its kind in Europe, and a recognised centre of research excellence in the UK. The department holds an international reputation for agricultural policy analysis and mathematical modelling, and has specialist expertise in the analysis of food markets and consumption behaviour within the European context. In recent years, through the department's Centre for Rural Economy, further research activity has focused on issues of countryside change and rural development, including studies of small firm behaviour and marketing of food and cultural products in rural areas. The personnel involved in relation at their specialisation will focus on food marketing (Dr. M. Ness) and food marketing (Dr. A. Tregear).

Workplan

Partner 11 is responsible for WP4 where two plenary meetings are planned.

In the first meeting each participant group brings experiences and results of research activities in its country of origin with reference to previous mentioned objectives of the WP, and identifies the most important topics and issues to be developed and deepened for the second meeting of Task1. The first Plenary meeting will give the opportunity to exchange research results and methodologies, to discuss the main issues in order to meet the objectives, and to select relevant common issues to be developed.

Development of selected issues will be based on bibliographical research, discussions and interviews with firms, public institutions and other relevant operators, information and experience exchanges within WP4 participants.

The second Plenary meeting will put together further development of research activities, and the results of the activity brought on to develop the selected specific issues.

Partner 11 will also participate in WP0, WP1, WP3, WP5, WP6, WP7,

Person-months

WP0	0,9	WP5	0,9
WP1	0,9	WP6	0,9
WP2		WP7	1,8
WP3	0,9	WP8	
WP4	1,8		

Deliverables as responsible

WP4 **D4 (END MONTH 18)** WP4 Report about the state of the art on the basis of meetings minutes, included bibliographical analysis and special part collecting reports on selected relevant issues

Deliverables as member

WP0 **D0 (END MONTH 2)** Guidelines with activities programme and definition of organisational aspects

WP1 **D1 (END MONTH 18)** WP1 Report about the state of the art on the basis of meetings minutes, included bibliographical analysis and special part collecting reports on selected relevant issues

WP3 **D3 (END MONTH 18)** WP3 Report about the state of the art on the basis of meetings minutes, included bibliographical analysis and special part collecting reports on selected relevant issues

WP5 **D5 (END MONTH 28)** WP5 Report on OLP characteristics, evolution, problems and opportunities

WP6 **D6 (END MONTH 28)** WP6 Report on Policies effects on OLPs

WP7 **D7 (END MONTH 36)** Meeting Proceedings

WP7 **D8 (END MONTH 36)** Final recommendation Key topics on OLPs and implications for EC policies implementation, with special reference to WTO international trade negotiations

PARTNER 12 (MEMBER) - UEDIN**Institute of Ecology and Resource Management (IERM), University of Edinburgh**

King's Buildings, West Mains Road, Edinburgh EH9 3JG,

Tel: 44 131 667 2041 Fax: 44 131 667 2601

Scientific teamDr Ron Wilson; Tel: 44 131 535 4112; E-mail: Ron.Wilson@ed.ac.ukMs Kate Corcoran; Tel: 44 131 535 4384; E-mail: corcoran@SRV0.bio.ed.ac.uk**Contractual links to other participants :**

It is linked to Partner 11 UNEW as member

Objectives

IERM is involved in academic research and teaching in Scotland, Europe and world-wide. The IERM team will contribute to WP2 and WP4 and will work in close liaison with the University of Newcastle upon Tyne. Specifically, contrasts will be drawn between OLP and 'conventional' production and distribution systems, indicating areas where the distinctive nature of OLPs are both enhanced and subverted by the system. Particular comment will be made on the potential impact that Agenda 2000 is likely to have on the production systems and marketing chains of OLPs. In WP4, consumer and industry issues and trends will be analysed for markets for mainstream and PDO/PGI products. This will significantly increase the knowledge base in the UK in these areas and enhance the market opportunities for OLPs.

Workplan

Partner 12 will be Assistant for WP2 where two plenary meetings are planned. In the first meeting each participant group brings experiences and results of research activities in its country of origin with reference to previous mentioned objectives of the WP, and identifies the most important topics and issues to be developed and deepened for the second meeting of Task1. The first Plenary meeting will give the opportunity to exchange research results and methodologies, to discuss the main issues in order to meet the objectives, and to select relevant common issues to be developed.

Development of selected issues will be based on bibliographical research, discussions and interviews with firms, public institutions and other relevant operators, information and experience exchanges within WP2 participants.

The second Plenary meeting will put together further development of research activities, and the results of the activity brought on to develop the selected specific issues.

Partner 12 will participate in WP1, WP4, WP5, WP6, WP7,

Person-months

WP0		WP5	1,0
WP1	1,0	WP6	1,0
WP2	2,0	WP7	2,0
WP3		WP8	
WP4	1,0		

Deliverables as responsible

WP2 **D2 (END MONTH 18)** WP2 Report about the state of the art on the basis of meetings minutes, included bibliographical analysis and special part collecting reports on selected relevant issues

Deliverables as member

WP1 **D1 (END MONTH 18)** WP1 Report about the state of the art on the basis of meetings minutes, included bibliographical analysis and special part collecting reports on selected relevant issues

WP4 **D4 (END MONTH 18)** WP4 Report about the state of the art on the basis of meetings minutes, included bibliographical analysis and special part collecting reports on selected relevant issues

WP5 **D5 (END MONTH 28)** WP5 Report on OLP characteristics, evolution, problems and opportunities

WP6 **D6 (END MONTH 28)** WP6 Report on Policies effects on OLPs

WP7 **D7 (END MONTH 36)** Meeting Proceedings

WP7 **D8 (END MONTH 36)** Final recommendation Key topics on OLPs and implications for EC policies implementation, with special reference to WTO international trade negotiations

PARTNER 13 (PRINCIPAL CONTRACTOR) - FUL
SEED (SocioEconomie Environnement Développement)
Fondation Universitaire Luxembourgeoise – Av. Longwy 185 – 6700 Arlon – Belgium
 Tel: 32 63 230 861 - Fax: 32 63 230 818

Scientific team

Prof. Marc Mormont; Ph. 063 230 868; E-mail: mormont@ful.ac.be
 (Director of the Research Unit)
 Pierre Stassart; Ph. 063-230816; E-mail: stassart@ful.ac.be
 Eric Collet; Ph. 063-230931; E-mail: collet@ful.ac.be

Contractual links to other participants :

No links to other Partners.

Objectives

SEED is a part of Fondation Universitaire Luxembourgeoise (120 employees). The unit consists in 15 researchers, which multidisciplinary background (sociologist, economist, engineer) and is specialised in environmental issues (quality building an related knowledge's production, innovation, expertise, sustainable development).

FUL is co-ordinator of COST A12 network : " rural innovation ". Marc Mormont is chairman of the Managing Committee. Eric Collet and Pierre Stassart contribute to the working group 4 on "Alternative Agri-food network". At Belgium level, FUL is coordinating a national Project (1996-2000) on new quality commodity chain in Belgium in cooperation with Prof G. Van Huylenbroeck (RUG Gent) and a flemisch NGO. Ful is member of commission on PDO –PGI (Region Walloons). Future projects are planed more specifically about PDO and PGO issues in Belgium and about quality network in the potatoes sector

Workplan

Partner 13 will be assistant for WP7 where the Steering Committee will meet together with the Responsibles of Task2 WPs (WP5 and WP6), and with Responsible (and assistant) of Task3 (WP7) in order to prepare Task3.

The Final Seminar will consist in contributions made by the participants on the basis of the WP1 to WP6, and in invited lectures prepared in collaboration with known experts in the concerned field, who will have to read the reports from the WorkPackages and deliver their points of views.

Final document with recommendation Key topics on OLPs and implications for EC policies implementation, with special reference to WTO international trade negotiations (month n.36).

Partner 13 will participate in WP1, WP2, WP3, WP4, WP5, WP6.

Person-months

WP0		WP5	1,7
WP1	1,7	WP6	0,9
WP2	0,9	WP7	2,6
WP3	0,9	WP8	
WP4	1,7		

Deliverables as responsible

WP7 **D7 (END MONTH 36)** Meeting Proceedings

WP7 **D8 (END MONTH 36)** Final recommendation Key topics on OLPs and implications for EC policies implementation, with special reference to WTO international trade negotiations

Deliverables as member

WP1 **D1 (END MONTH 18)** WP1 Report about the state of the art on the basis of meetings minutes, included bibliographical analysis and special part collecting reports on selected relevant issues

WP2 **D2 (END MONTH 18)** WP2 Report about the state of the art on the basis of meetings minutes, included bibliographical analysis and special part collecting reports on selected relevant issues

WP3 **D3 (END MONTH 18)** WP3 Report about the state of the art on the basis of meetings minutes, included bibliographical analysis and special part collecting reports on selected relevant issues

WP4 **D4 (END MONTH 18)** WP4 Report about the state of the art on the basis of meetings minutes, included bibliographical analysis and special part collecting reports on selected relevant issues

WP5 **D5 (END MONTH 28)** WP5 Report on OLP characteristics, evolution, problems and opportunities

WP6 **D6 (END MONTH 28)** WP6 Report on Policies effects on OLPs

PARTNER 14 (PRINCIPAL CONTRACTOR) - UNIVHELSINKI

Faculty of Agriculture and Forestry Fondation Universitaire Luxembourgeoise – Av. P.O.Box 27
 (Latokartanonkaari 9)
 FIN-00014 University of Helsinki, Finland
 Tel. 358-9-1911, fax 358-9-19158096

Scientific team

Mr *Jukka Kola*, professor of agricultural policy, Dept of Economics and Management, University of Helsinki,
 Ms *Terhi Latvala*
 Ms. *Sirpa Karjalainen*; The Ministry of Agriculture and Forestry (MMM)
 Ms. *Sirkka Uski*; The Union of Rural Advisory Centres (MSKL)
 To be named later, the Finnish Food and Drink Industries' Federation (ETL).

Contractual links to other participants :

No links to other Partners

Objectives

The University of Helsinki is by far the largest university in Finland. The teaching and research at the Faculty of Agriculture and Forestry, one of the ten faculties in the University, is based on the principle of sustainable use of natural resources.

The Department of Economics and Management at the University of Helsinki is an education and research unit in agricultural economics and policy, food economics, household economics and environmental economics. The objective of the Department of Economics and Management is to maintain the high standard in the research and teaching, according to the principle of sustainable development. The Department considers that the development of rural areas is the cornerstone for living conditions in general in the society-wide context. Hence, it is important to preserve the viability of rural areas.

Consequently, the aforementioned issues of sustainable development and rural livelihood are closely connected to the preservation of traditional production activities in the Finnish rural areas, and this, in turn, relates closely to the issues of origins of farm and food products, their labelling, and PDO/PGI products.

The team, in this project, in order to obtain more information about problems related quality issue and the certification activity 11 will be supported by the Ministry of Agriculture and Forestry (MMM), the Union of Rural Advisory Centres (MSKL), and probably also the Finnish Food and Drink Industries' Federation (ETL), all located in Helsinki. They all play important roles in the planning, extension, information and knowledge diffusion of issues related to quality systems and origins labelling of agricultural and food products in Finland.

Workplan

Partner 14 will be assistant in WP6 where together with assistant Partner and the Responsible of each WP of Task1 and/or their assistant Partners, will produce a synthetic document on the topic assigned, based on the discussions made during the meetings and work of Task1.

One meeting is planned at month n.26 in order to discuss these documents, and to give indications to Report on Policies effects on OLPs.

Responsibles (and their assistants) of WP6 prepare a final Report on Policies effects on OLPs., on the basis of work done and meeting discussions (months 27-28).

Partner 14 will participate in WP2, WP3, WP4, WP7

Person-months

WP0		WP5	
WP1		WP6	2,0
WP2	1,0	WP7	2,0
WP3	1,0	WP8	
WP4			

Deliverables as responsible

WP6 **D6 (END MONTH 28)** WP6 Report on Policies effects on OLPs

Deliverables as member

WP2 **D2 (END MONTH 18)** WP2 Report about the state of the art on the basis of meetings minutes, included bibliographical analysis and special part collecting reports on selected relevant issues

WP3 **D3 (END MONTH 18)** WP3 Report about the state of the art on the basis of meetings minutes, included bibliographical analysis and special part collecting reports on selected relevant issues

WP4 **D4 (END MONTH 18)** WP4 Report about the state of the art on the basis of meetings minutes, included bibliographical analysis and special part collecting reports on selected relevant issues

WP7 **D7 (END MONTH 36)** Meeting Proceedings

WP7 **D8 (END MONTH 36)** Final recommendation Key topics on OLPs and implications for EC policies implementation, with special reference to WTO international trade negotiations

PARTNER 15 (PRINCIPAL CONTRACTOR) - INIA
Departamento de Estudos de Economia e Sociologia Agrárias (DEESA)
 Quinta do Marques – Oeiras (Portugal)
 Tel. 351 2131 31741 Fax 351 213131783

Scientific team

António FRAGATA, Responsible of the Unit
 Laura Larcher GRAÇA - Agostinho de CARVALHO - Maria Fernanda MESQUITA - Artur CRISTOVÃO - Manuel Luis TIBÉRIO - Jerónimo C-R SANTOS - Luis F. PACHECO - Jorge S. MARQUES - João Miguel PEREIRA - Mariana SALDANHA

Contractual links to other participants :

No links to other Partners

Objectives

The Department *DEESA* is one of the 14 *Estação Agronómica Nacional* Departments. The *Estação Agronómica Nacional*, established in Oeiras, near Lisbon, is a national centre of research. The *DEESA* is composed of 12 elements holding doctorate degrees. It should be stressed that *DEESA* has a policy which stimulates the development of strong communications linkages with other institutions, both at the national and regional levels, in the research and policy making worlds: Universities of Lisbon, Trás-os-Montes e Alto Douro and Algarve; national and regional departments of Agriculture Ministry.

Workplan

Partner 15 will be assistant in WP 3 where two plenary meetings are planned.

In the first meeting each participant group brings experiences and results of research activities in its country of origin with reference to previous mentioned objectives of the WP, and identifies the most important topics and issues to be developed and deepened for the second meeting of Task1. The first Plenary meeting will give the opportunity to exchange research results and methodologies, to discuss the main issues in order to meet the objectives, and to select relevant common issues to be developed.

Development of selected issues will be based on bibliographical research, discussions and interviews with firms, public institutions and other relevant operators, information and experience exchanges within WP3 participants.

The second Plenary meeting will put together further development of research activities, and the results of the activity brought on to develop the selected specific issues.

Partner 15 will participate in WP1, WP2, WP4, WP5, WP6, WP7

Person-months

WP0		WP5	1,6
WP1	1,2	WP6	1,6
WP2	1,6	WP7	3,2
WP3	1,6	WP8	
WP4	1,6		

Deliverables as responsible

WP3 **D3 (END MONTH 18)** WP3 Report about the state of the art on the basis of meetings minutes, included bibliographical analysis and special part collecting reports on selected relevant issues

Deliverables as member

WP1 **D1 (END MONTH 18)** WP1 Report about the state of the art on the basis of meetings minutes, included bibliographical analysis and special part collecting reports on selected relevant issues

WP2 **D2 (END MONTH 18)** WP2 Report about the state of the art on the basis of meetings minutes, included bibliographical analysis and special part collecting reports on selected relevant issues

WP4 **D4 (END MONTH 18)** WP4 Report about the state of the art on the basis of meetings minutes, included bibliographical analysis and special part collecting reports on selected relevant issues

WP5 **D5 (END MONTH 28)** WP5 Report on OLP characteristics, evolution, problems and opportunities

WP6 **D6 (END MONTH 28)** WP6 Report on Policies effects on OLPs

WP7 **D7 (END MONTH 36)** Meeting Proceedings

WP7 **D8 (END MONTH 36)** Final recommendation Key topics on OLPs and implications for EC policies implementation, with special reference to WTO international trade negotiations

4. PROJECT MANAGEMENT AND COORDINATION

4.1. Administrative management

The co-ordinator will have the scientific, administrative and financial responsibilities for the project. He will have the relationships with the EC administration as well as with the administration of each participating organisation. Concerning the scientific aspect, the co-ordinator will be responsible for the specific co-ordination actions to be undertaken during the course of the project (chairing of the steering committee, planning of the meetings, monitoring of the teams, supervision of the report writing, making the decisions). He will supervise, with the help of a specialised technician to be recruited, the collecting and elaboration of the bibliographical references in the framework of the internet site to be created

4.2. Project partners and decision making structure

The proposal involves 15 public or private research institutes. They are clustered into 15 «partners», 9 as Principal Contractors and 6 as Members. 13 partners appear as public research administrations (universities and research institutes). The project will benefit of the experience many partners have had within integrated European scientific projects. Part of the partners involved in this project have worked already together on FAIR projects. Moreover, the majority of them are deeply involved in research related to OLPs, have acquired a considerable co-operation experience and have already exchanged data, research results and publications in the last years.

The co-ordinator and the partners promoting this Concerted Action will act as the Project “Steering Committee” chaired by the co-ordinator. This Committee will be responsible for the overall management of the project and will informally communicate by e-mail, telephone and fax as required. The Steering Committee will meet four times (at the beginning of Task0 and at the end of Task1, Task2 and Task3) and for an extra day during the Plenary project meetings (four meetings). For decisions relating to the management of the project the views of all partners will be considered; however, if there is no consensus of opinion, the Steering Committee will be responsible for making the final decisions. The Steering Committee will decide how to proceed if tasks cannot be completed or if alternative tasks need to be undertaken.

4.3. Management of WorkPackages

The proposal is divided into 5 Tasks (4 tasks plus the “zero” task) and 9 WorkPackages (WPs) described according to the general scientific scheme illustrated below (see Scheme). The researchers involved in the Action will be attributed to each WP according to their specific competence. According to this approach, some researchers will play an “active role” (production and presentation of reports related to the topics of each WP), while other researchers will only participate in the discussion. It is also planned that in Task1 each researcher can actively participate in two WPs only. All the researchers will actively participate in the other WPs (from n.5 to n.7). In Task1, the results of WPs activity will be presented and discussed in two Plenary meetings. Each Plenary meeting will be articulated into four “in-line” seminars (WP1 to WP4), for a total of 2-3 working days. This solution will allow all the researchers to take part to each seminar without overlapping, and reduce organisation and travel costs.

Each WP will lead to exploitable information in terms of interest for the EU and for policy makers or for scientific experts in the field. The vertically integrated approach requires the upstream WPs to provide the information necessary to the downstream WPs in order to complete Task2 and Task3.

Each WP will have one Responsible chosen on the basis of his scientific competence; the Responsible Partner will be supported by one Assistant Partner (see Scheme below). All partners will have some responsibility in co-ordination in some WP, in order to stimulate the proactive participation in the CA.

Each WP co-ordination activity will involve at least two Partners from different countries. WPs Responsibles will be charged to organise the activities, the scientific work and the specific meetings concerning their WP. They will also have the responsibility of producing reports and deliverables (on the basis of documents produced by all partners and of discussion held during the Meetings) and ensuring that milestones are achieved on time. The project Co-ordinator along with the project Steering Committee will be responsible for the timing and integration of the different WPs. If some problems arise during the period devoted to a WP, the co-ordinator can, following consultation with other partners and the Committee, propose an alternative course of action.

4.4. Communication management and information flow

Particular attention will be paid to the dissemination of information between the partners involved in the Action within WPs. Similarly, the flow of information between partners involved in different WPs will be as important. This is particularly relevant due to the integrated approach chosen.

Besides Plenary Meetings, the circulation of information and experiences exchanges among the partners of the Group will also be fulfilled through periodic limited short visits/exchanges, intra-Task informal meetings among the participants to each Task, inter-Task informal meetings among the Co-ordinators and/or Assistants of each Task.

Further, it will be necessary to provide common means of information exchange, especially where the output from one WP will form the input into another WP, as from Task1 to Task2 and from Task2 to Task3. A special Task (Task4) will take into account this particular aspect. Task 4 will homogenise and organise the information which every WP will produce, giving it back to the other WPs and Tasks, and to all the other users. This goal will be facilitated by the use of compatible analytical tools at each stage of the work. An Internet Web Site will be set up in order to promote and share common information collected and produced during the Action. In addition to the informal exchange of information via e-mail, telephone and fax, the Web Site will enable Partners to have a direct availability of information (see WP8).

Partners will be charged to contact firms, private and public institutions, consumers' and producers' associations etc. in order to make them participate to DOLPHINS activities, in particular providing information, data, and their experiences even during the Meetings.

The Web page will increase over the time in terms of availability of information, giving all the operators interested in OLPs a constant reference and information point. The Web page may «survive» after the conclusion of DOLPHINS Concerted Action.

Plenary Meeting Proceedings, and in particular the Final Plenary Meeting Proceedings (Task3), will be published and diffused among academics, policy-makers, firms and other institutions also by means of the Web page.

4.5. Progress monitoring

A strict periodic evaluation of the work be done within specific meetings of the Steering Committee. Progress will be carefully monitored to ensure that milestones are met and deliverables produced on time. Plenary meetings will be organised for dissemination of information and results to partners and policy makers, and other operators involved in OLPs.

4.6. Project planning and time table

TASK 0 Starting phase	WP0 – Starting phase Participants: P1+SC+P3, P10, P7, P11 Work: General Organization, Guidelines for Task 1, Start Task4 (DOLPHINS Web Page)	0-2
---------------------------------	---	-----

TASK 4 Information and Dissemination	TASK 1 Analytical Work Packages	WP 1 OLPs: definitions, characteristics, legal protection <i>R.3; A.4</i>	WP 2 link OLPs and production-marketing systems <i>R.10; A.6 and 15</i>	WP 3 link OLPs and rural development <i>R.7; A.12</i>	WP 4 link OLPs and consumers / citizens <i>R.11; A.2</i>	
		bibliographic research, analysis of researche results	bibliographic research, analysis of researche results	bibliographic research, analysis of researche results	bibliographic research, analysis of researche results	3-9
		FIRST PLENARY MEETING				
		bibliographic research, analysis of researche results, specific topics	bibliographic research, analysis of researche results, specific topics	bibliographic research, analysis of researche results, specific topics	bibliographic research, analysis of researche results, specific topics	10-16
		SECOND PLENARY MEETING				
	D1 Final document	D2 Final document	D3 Final document	D4 Final document	18	
WP8 Information and Dissemination <i>Resp.1</i> <i>Ass. 5; 7; 8</i>	TASK 2 Operational Work Packages	Start of Task2: Meeting P1+SC+P5, P8 Work: Guidelines for Task2			19	
		WP 5 Characteristics, evolution, problems and opportunities for OLPs <i>R.5; A.9</i>	WP 6 Policies evaluation <i>R.8; A.14</i>			
		analysis of Task1 results documents for third meeting	analysis of Task1 results documents for third meeting		19-26	
		THIRD PLENARY MEETING				
		D5 - Final document	D6 - Final document		27-28	
D9 D10 D11 D12	TASK 3 Synthesis and Recommendations	WP7 - Key topics on OLPs and implications for EU policies implementation, with special reference to WTO international trade negotiations				
		Start of Task3: Meeting P1+SC+P5+P8+P1 Work: Guidelines for Task3				
		Documents for fourth meeting, bibliographic research			29-34	
		FINAL PLENARY MEETING				
	D7 – Meeting Proceedings	D8 – Final Recommendations		35-36		

P = Partner; R = Responsible; A = Responsible Assistant; SC = Steering Committee (P1, P5, P7, P8); D = Deliverable

5. EXPLOITATION AND DISSEMINATION ACTIVITIES

Dissemination aspects are a crucial element in the DOLPHINS proposal. As a matter of fact information exchanges between partners and researchers of the DOLPHINS network represent the aim of the proposal itself.

The circulation of information and the discussion of research results concern all partners involved in the proposal, and this is made possible by the organisation of working activities inside WPs, by means of the Plenary Meetings scheduled, short-visit exchanges of researchers within the DOLPHINS network, and the setting-up of a Web Site (Task4).

The Web Site will be the main instrument to disseminate results to a wide public (academics, policy-makers, firms, consumers, etc.), and will contain the results of the DOLPHINS activities during the three-year period (databases of researches, publications and institutions involved in OLPs, documents, meeting proceedings, etc.). The participation and support of firms, public institutions, associations, will help the efficacy of the Web Site.

Besides the Web Site, the dissemination of the results of the DOLPHINS activity will be provided by the Final Meeting Proceedings printing and distribution, by periodical press-releases, written contributions (articles) to scientific Journals, open intra-WP short informal seminars, participation and papers submitted by the DOLPHINS researchers to other congress and seminars.

6. ETHICAL ASPECTS

No major ethical issues will be raised in the action proposed here.

All personal information collected during DOLPHINS' activities will be kept in a confidential manner, used only for the objectives of the Action, and diffused only after approval of the people who provided information.